

## Product datasheet for **TA341333**

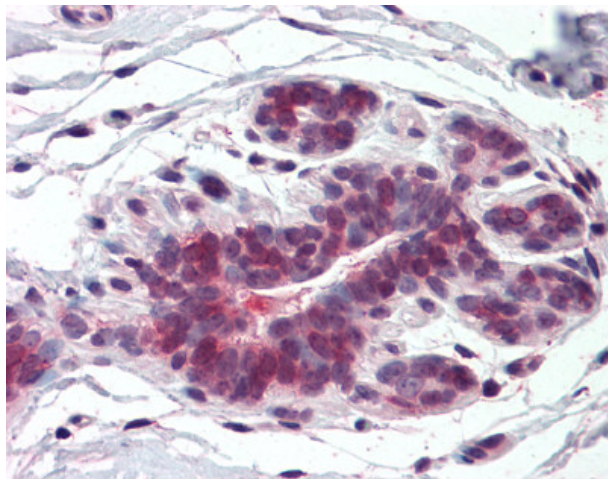
### ELOVL5 Rabbit Polyclonal Antibody

#### Product data:

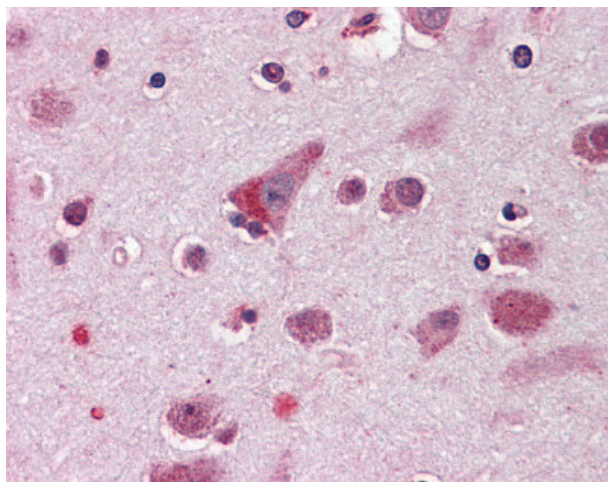
Product Type:	Primary Antibodies
Applications:	IHC
Recommended Dilution:	IHC-P (5 - 10 µg/ml)
Reactivity:	Human (Predicted: Monkey, Mouse, Dog)
Host:	Rabbit
Clonality:	Polyclonal
Immunogen:	HELO1 / ELOVL5 antibody was raised against synthetic 18 amino acid peptide from internal region of human ELOVL5. Percent identity with other species by BLAST analysis: Human, Gorilla, Orangutan, Gibbon, Monkey, Elephant, Rabbit (100%); Marmoset, Mouse, Dog (94%); Rat, Hamster, Panda (89%); Bat (83%).
Formulation:	PBS, 0.1% sodium azide.
Concentration:	lot specific
Purification:	Immunoaffinity purified
Conjugation:	Unconjugated
Storage:	Store at -20°C as received.
Stability:	Stable for 12 months from date of receipt.
Gene Name:	ELOVL fatty acid elongase 5
Database Link:	<a href="#">NP_068586</a> <a href="#">Entrez Gene 68801 Mouse</a> <a href="#">Entrez Gene 610377 Dog</a> <a href="#">Entrez Gene 712243 Monkey</a> <a href="#">Entrez Gene 60481 Human</a> <a href="#">Q9NYP7</a>
Synonyms:	dj483K16.1; HELO1; SCA38
Protein Families:	Transmembrane
Protein Pathways:	Biosynthesis of unsaturated fatty acids



[View online »](#)

**Product images:**

Anti-ELOVL5 antibody IHC of human breast. Immunohistochemistry of formalin-fixed, paraffin-embedded tissue after heat-induced antigen retrieval.



Anti-ELOVL5 antibody IHC of human brain, cortex. Immunohistochemistry of formalin-fixed, paraffin-embedded tissue after heat-induced antigen retrieval.