

Product datasheet for **TA341332**

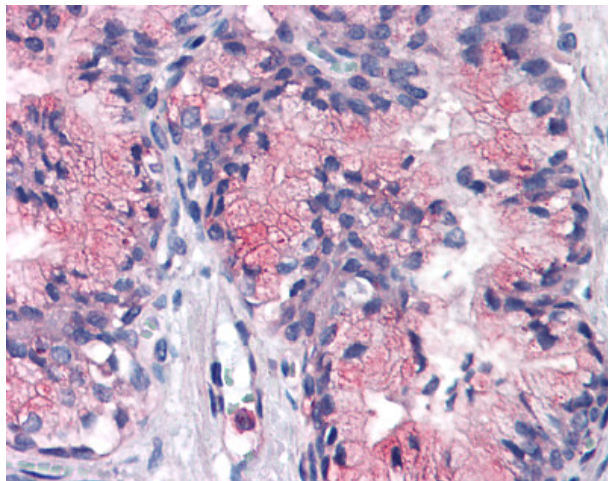
ATP1B3 Rabbit Polyclonal Antibody

Product data:

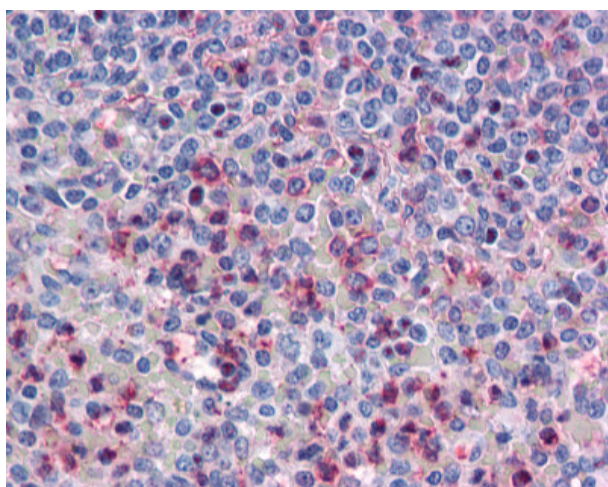
Product Type:	Primary Antibodies
Applications:	IHC
Recommended Dilution:	IHC-P (2.5 - 5 µg/ml)
Reactivity:	Human (Predicted: Bat, Pig, Guinea Pig)
Host:	Rabbit
Clonality:	Polyclonal
Immunogen:	ATP1B3 antibody was raised against synthetic 18 amino acid peptide from internal region of human ATP1B3. Percent identity with other species by BLAST analysis: Human, Chimpanzee, Orangutan, Gibbon, Monkey, Marmoset, Mouse, Rat, Hamster, Panda, Dog, Bovine, Horse, Rabbit (100%); Elephant, Bat, Pig, Guinea pig (94%); Galago, Platypus (83%).
Formulation:	PBS, 0.1% sodium azide.
Concentration:	lot specific
Purification:	Immunoaffinity purified
Conjugation:	Unconjugated
Storage:	Store at -20°C as received.
Stability:	Stable for 12 months from date of receipt.
Gene Name:	ATPase Na ⁺ /K ⁺ transporting subunit beta 3
Database Link:	NP_001670 Entrez Gene 483 Human P54709
Synonyms:	ATPB-3; CD298
Protein Families:	Transmembrane
Protein Pathways:	Cardiac muscle contraction



[View online »](#)

Product images:

Anti-ATP1B3 antibody IHC of human prostate. Immunohistochemistry of formalin-fixed, paraffin-embedded tissue after heat-induced antigen retrieval.



Anti-ATP1B3 antibody IHC of human spleen. Immunohistochemistry of formalin-fixed, paraffin-embedded tissue after heat-induced antigen retrieval.