

## Product datasheet for **TA341330**

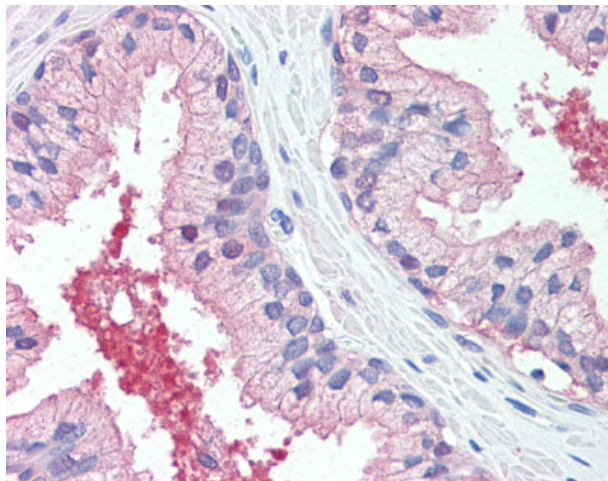
### Cell adhesion molecule 2 (CADM2) Rabbit Polyclonal Antibody

#### Product data:

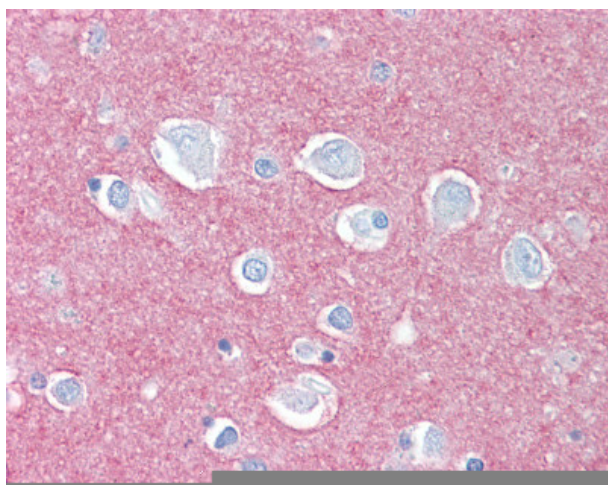
Product Type:	Primary Antibodies
Applications:	IHC
Recommended Dilution:	IHC-P (10 - 15 µg/ml)
Reactivity:	Human (Predicted: Mouse, Rat, Hamster)
Host:	Rabbit
Clonality:	Polyclonal
Immunogen:	CADM2 antibody was raised against synthetic 16 amino acid peptide from extracellular domain of human CADM2. Percent identity with other species by BLAST analysis: Human, Gorilla, Gibbon, Monkey, Marmoset, Bovine, Dog, Bat, Elephant, Panda, Horse, Rabbit, Pig, Opossum (100%); Mouse, Rat, Hamster (94%); Platypus (88%); Turkey, Chicken, Xenopus, Pufferfish, Stickleback (81%).
Formulation:	PBS, 0.1% sodium azide.
Concentration:	lot specific
Purification:	Immunoaffinity purified
Conjugation:	Unconjugated
Storage:	Store at -20°C as received.
Stability:	Stable for 12 months from date of receipt.
Gene Name:	cell adhesion molecule 2
Database Link:	<a href="#">NP_001161146</a> <a href="#">Entrez Gene 239857 Mouse</a> <a href="#">Entrez Gene 360687 Rat</a> <a href="#">Entrez Gene 253559 Human</a> <a href="#">Q8N3J6</a>
Synonyms:	IGSF4D; Necl-3; NECL3; SynCAM 2; synCAM2
Protein Families:	Druggable Genome, Transmembrane



[View online »](#)

**Product images:**

Anti-CADM2 antibody IHC of human prostate. Immunohistochemistry of formalin-fixed, paraffin-embedded tissue after heat-induced antigen retrieval.



Anti-CADM2 antibody IHC of human brain neuropil. Immunohistochemistry of formalin-fixed, paraffin-embedded tissue after heat-induced antigen retrieval.