

## Product datasheet for **TA341327**

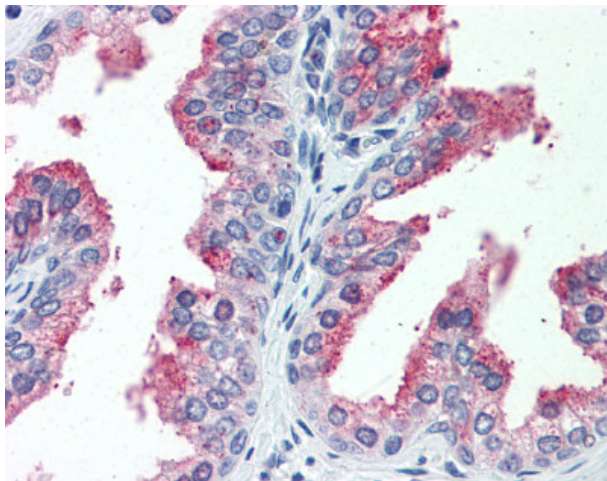
### CDCP1 Rabbit Polyclonal Antibody

#### Product data:

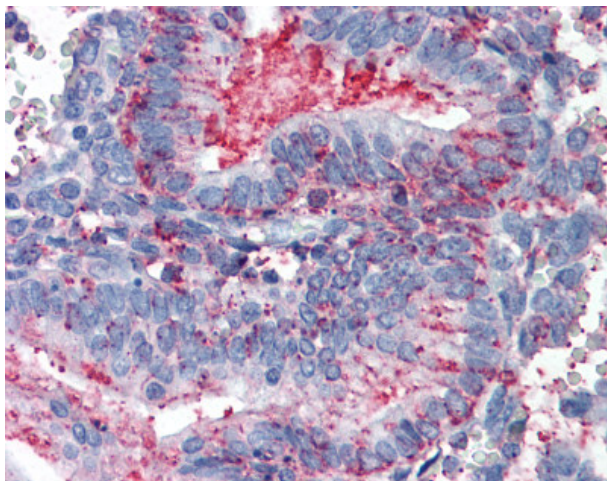
Product Type:	Primary Antibodies
Applications:	IHC
Recommended Dilution:	IHC-P (10 - 12.5 µg/ml)
Reactivity:	Human (Predicted: Hamster, Rabbit)
Host:	Rabbit
Clonality:	Polyclonal
Immunogen:	CDCP1 antibody was raised against synthetic 15 amino acid peptide from extracellular domain of human CDCP1. Percent identity with other species by BLAST analysis: Human, Gorilla, Gibbon, Monkey, Marmoset, Panda, Horse (100%); Hamster, Rabbit (93%); Mouse, Rat, Dog, Elephant, Pig (87%).
Formulation:	PBS, 0.1% sodium azide.
Concentration:	lot specific
Purification:	Immunoaffinity purified
Conjugation:	Unconjugated
Storage:	Store at -20°C as received.
Stability:	Stable for 12 months from date of receipt.
Gene Name:	CUB domain containing protein 1
Database Link:	<a href="#">NP_073753</a> <a href="#">Entrez Gene 64866 Human Q9H5V8</a>
Synonyms:	CD318; SIMA135; TRASK
Protein Families:	ES Cell Differentiation/IPS, Transmembrane



[View online »](#)

**Product images:**

Anti-CDCP1 antibody IHC of human prostate. Immunohistochemistry of formalin-fixed, paraffin-embedded tissue after heat-induced antigen retrieval.



Anti-CDCP1 antibody IHC of human uterus. Immunohistochemistry of formalin-fixed, paraffin-embedded tissue after heat-induced antigen retrieval.