

Product datasheet for **TA341326**

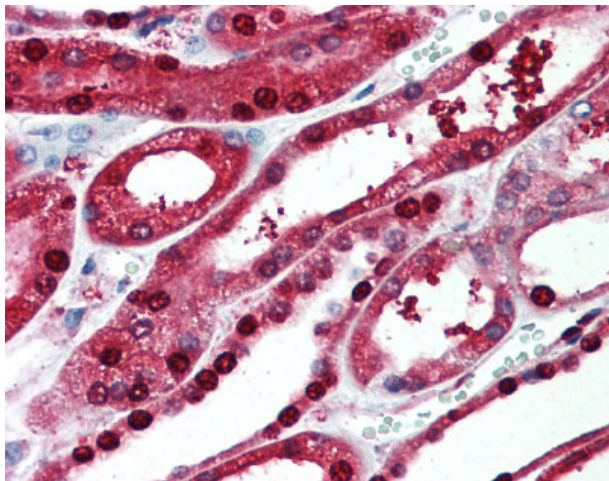
PIGR Rabbit Polyclonal Antibody

Product data:

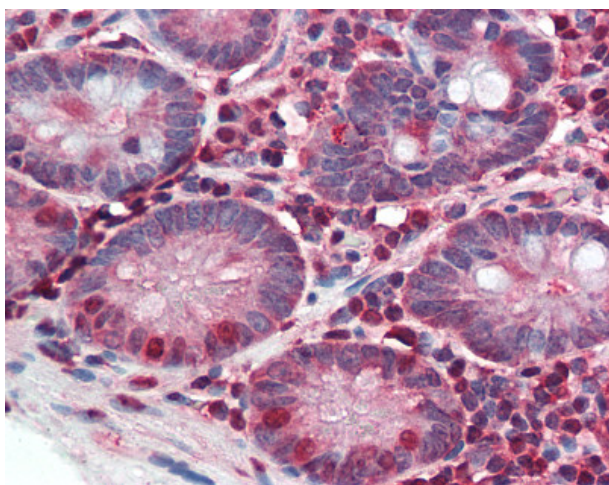
| | |
|-----------------------|--|
| Product Type: | Primary Antibodies |
| Applications: | IHC |
| Recommended Dilution: | IHC-P (5 - 7.5 µg/ml) |
| Reactivity: | Human |
| Host: | Rabbit |
| Clonality: | Polyclonal |
| Immunogen: | PIGR antibody was raised against synthetic 18 amino acid peptide from cytoplasmic domain of human PIGR. Percent identity with other species by BLAST analysis: Human, Gorilla, Orangutan, Gibbon, Monkey (100%); Marmoset (89%); Dog, Elephant, Horse (83%). |
| Formulation: | PBS, 0.1% sodium azide. |
| Concentration: | lot specific |
| Purification: | Immunoaffinity purified |
| Conjugation: | Unconjugated |
| Storage: | Store at -20°C as received. |
| Stability: | Stable for 12 months from date of receipt. |
| Gene Name: | polymeric immunoglobulin receptor |
| Database Link: | NP_002635 Entrez Gene 5284 Human P01833 |
| Synonyms: | FLJ22667; MGC125361; MGC125362 |
| Protein Families: | Druggable Genome, Secreted Protein, Transmembrane |



[View online »](#)

Product images:

Anti-PIGR antibody IHC of human kidney. Immunohistochemistry of formalin-fixed, paraffin-embedded tissue after heat-induced antigen retrieval.



Anti-PIGR antibody IHC of human small intestine. Immunohistochemistry of formalin-fixed, paraffin-embedded tissue after heat-induced antigen retrieval.