

Product datasheet for **TA341324**

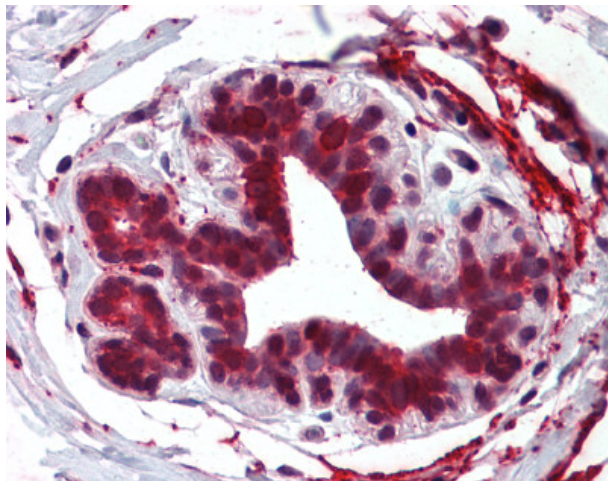
ELOVL5 Rabbit Polyclonal Antibody

Product data:

Product Type:	Primary Antibodies
Applications:	IHC
Recommended Dilution:	IHC-P (10 - 15 µg/ml)
Reactivity:	Human (Predicted: Mouse, Hamster, Rabbit)
Host:	Rabbit
Clonality:	Polyclonal
Immunogen:	HELO1 / ELOVL5 antibody was raised against synthetic 17 amino acid peptide from internal region of human ELOVL5. Percent identity with other species by BLAST analysis: Human, Gorilla, Orangutan, Monkey, Marmoset (100%); Gibbon, Mouse, Hamster, Elephant, Rabbit (94%); Rat, Dog, Panda (88%); Bat, Bovine, Goat (82%).
Formulation:	PBS, 0.1% sodium azide.
Concentration:	lot specific
Purification:	Immunoaffinity purified
Conjugation:	Unconjugated
Storage:	Store at -20°C as received.
Stability:	Stable for 12 months from date of receipt.
Gene Name:	ELOVL fatty acid elongase 5
Database Link:	NP_068586 Entrez Gene 68801 Mouse Entrez Gene 60481 Human Q9NYP7
Synonyms:	dJ483K16.1; HELO1; SCA38
Protein Families:	Transmembrane
Protein Pathways:	Biosynthesis of unsaturated fatty acids



[View online »](#)

Product images:

Anti-ELOVL5 antibody IHC of human breast. Immunohistochemistry of formalin-fixed, paraffin-embedded tissue after heat-induced antigen retrieval.