

## Product datasheet for **TA341323**

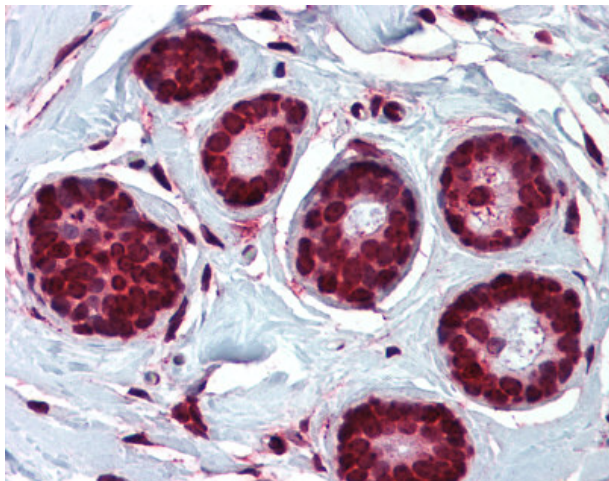
### ELOVL5 Rabbit Polyclonal Antibody

#### Product data:

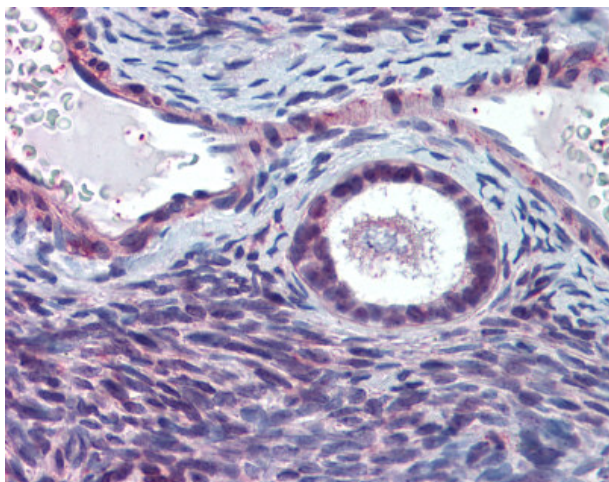
|                       |  |
|-----------------------|--|
| Product Type:         | Primary Antibodies   |
| Applications:         | IHC  |
| Recommended Dilution: | IHC-P (10 - 15 µg/ml)  |
| Reactivity:           | Human  |
| Host:                 | Rabbit   |
| Clonality:            | Polyclonal   |
| Immunogen:            | HELO1 / ELOVL5 antibody was raised against synthetic 15 amino acid peptide from N-terminus of human ELOVL5. Percent identity with other species by BLAST analysis: Human, Gorilla, Orangutan, Gibbon, Monkey, Marmoset, Turkey, Chicken (100%); Elephant, Catfish (93%); Mouse, Rat, Dog, Hamster, Horse, Rabbit, Opossum, Platypus (87%); Bovine, Goat, Panda, Xenopus, Salmon (80%). |
| Formulation:          | PBS, 0.1% sodium azide.  |
| Concentration:        | lot specific   |
| Purification:         | Immunoaffinity purified  |
| Conjugation:          | Unconjugated   |
| Storage:              | Store at -20°C as received.  |
| Stability:            | Stable for 12 months from date of receipt.   |
| Gene Name:            | ELOVL fatty acid elongase 5  |
| Database Link:        | <a href="#">NP_068586</a><br><a href="#">Entrez Gene 60481 Human Q9NYP7</a>  |
| Synonyms:             | dj483K16.1; HELO1; SCA38   |
| Protein Families:     | Transmembrane  |
| Protein Pathways:     | Biosynthesis of unsaturated fatty acids  |



[View online »](#)

**Product images:**

Anti-ELOVL5 antibody IHC of human breast. Immunohistochemistry of formalin-fixed, paraffin-embedded tissue after heat-induced antigen retrieval.



Anti-ELOVL5 antibody IHC of human ovary. Immunohistochemistry of formalin-fixed, paraffin-embedded tissue after heat-induced antigen retrieval.