

Product datasheet for **TA341320**

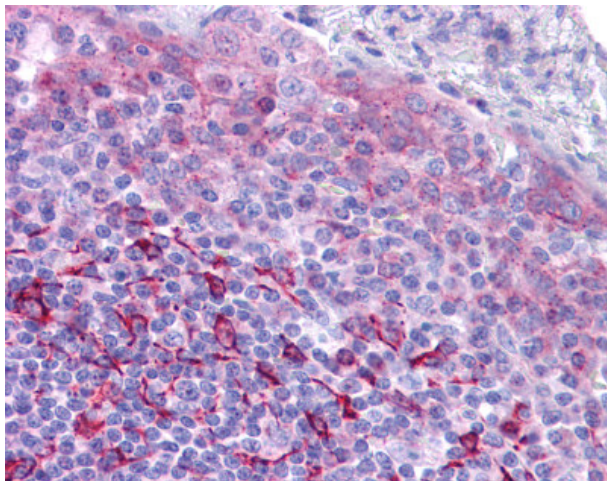
H963 (GPR171) Rabbit Polyclonal Antibody

Product data:

Product Type:	Primary Antibodies
Applications:	IHC
Recommended Dilution:	IHC-P (10 - 20 µg/ml)
Reactivity:	Human (Predicted: Mouse, Rat, Bat, Dog)
Host:	Rabbit
Clonality:	Polyclonal
Immunogen:	GPR171 antibody was raised against synthetic 16 amino acid peptide from 3rd extracellular domain of human GPR171. Percent identity with other species by BLAST analysis: Human, Gorilla, Gibbon, Monkey, Bovine, Rabbit (100%); Mouse, Rat, Dog, Bat, Elephant, Panda (94%); Marmoset, Horse, Opossum (88%).
Formulation:	PBS, 0.1% sodium azide.
Concentration:	lot specific
Purification:	Immunoaffinity purified
Conjugation:	Unconjugated
Storage:	Store at -20°C as received.
Stability:	Stable for 12 months from date of receipt.
Gene Name:	G protein-coupled receptor 171
Database Link:	NP_037440 Entrez Gene 229323 Mouse Entrez Gene 688737 Rat Entrez Gene 485716 Dog Entrez Gene 29909 Human O14626
Synonyms:	H963
Protein Families:	Druggable Genome, GPCR, Transmembrane



[View online »](#)

Product images:

Anti-GPR171 antibody IHC of human tonsil. Immunohistochemistry of formalin-fixed, paraffin-embedded tissue after heat-induced antigen retrieval.