

Product datasheet for **TA341318**

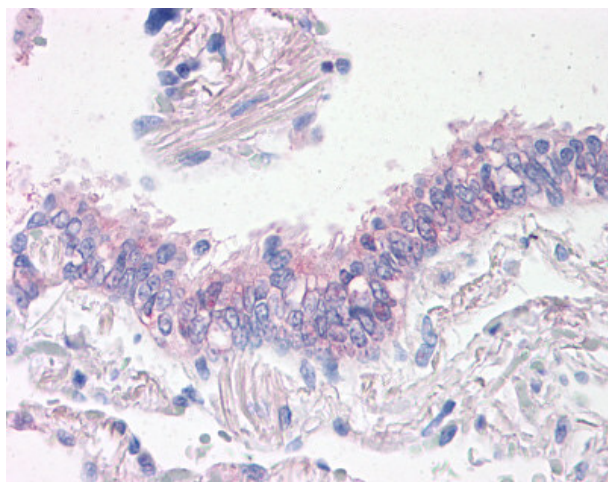
Prominin 2 (PROM2) Rabbit Polyclonal Antibody

Product data:

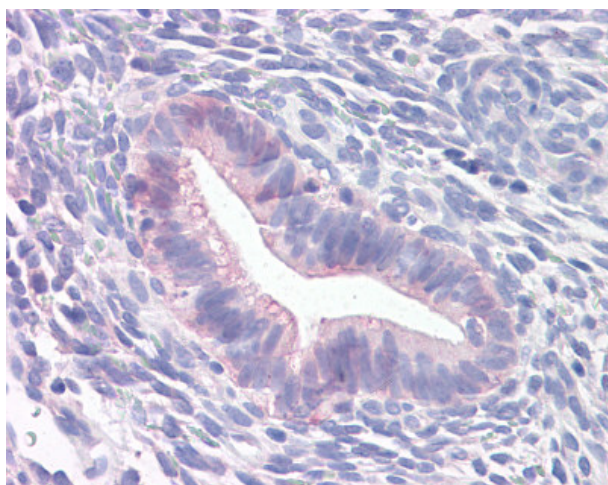
Product Type:	Primary Antibodies
Applications:	IHC
Recommended Dilution:	IHC-P (15 - 20 µg/ml)
Reactivity:	Human (Predicted: Monkey, Bovine)
Host:	Rabbit
Clonality:	Polyclonal
Immunogen:	Prominin 2 / PROM2 antibody was raised against synthetic 16 amino acid peptide from internal region of human PROM2. Percent identity with other species by BLAST analysis: Human (100%); Gorilla, Monkey, Marmoset, Bovine (94%); Pig (88%); Hamster, Horse (81%).
Formulation:	PBS, 0.1% sodium azide.
Concentration:	lot specific
Purification:	Immunoaffinity purified
Conjugation:	Unconjugated
Storage:	Store at -20°C as received.
Stability:	Stable for 12 months from date of receipt.
Gene Name:	prominin 2
Database Link:	NP_653308 Entrez Gene 704208 Monkey Entrez Gene 150696 Human Q8N271
Synonyms:	PROML2
Protein Families:	Transmembrane



[View online »](#)

Product images:

Anti-PROM2 antibody IHC of human lung, respiratory epithelium. Immunohistochemistry of formalin-fixed, paraffin-embedded tissue after heat-induced antigen retrieval.



Anti-PROM2 antibody IHC of human uterus. Immunohistochemistry of formalin-fixed, paraffin-embedded tissue after heat-induced antigen retrieval.