

## Product datasheet for **TA341317**

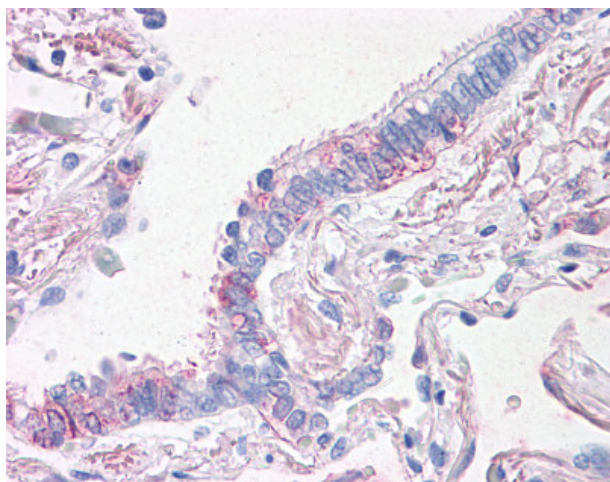
### Prominin 2 (PROM2) Rabbit Polyclonal Antibody

#### Product data:

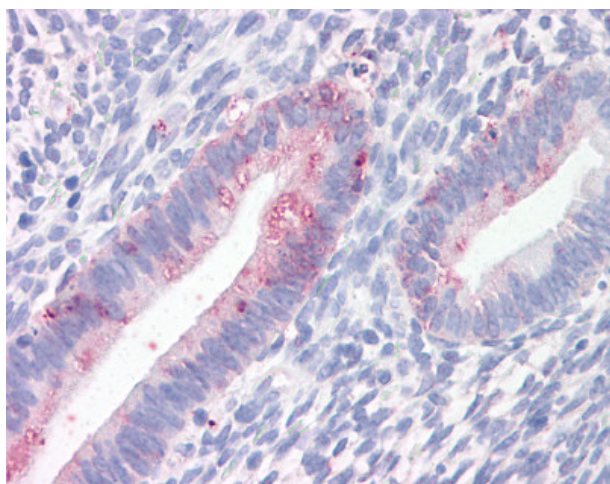
|                       |   |
|-----------------------|---|
| Product Type:         | Primary Antibodies  |
| Applications:         | IHC   |
| Recommended Dilution: | IHC-P (15 - 20 µg/ml)   |
| Reactivity:           | Human (Predicted: Bovine, Horse)  |
| Host:                 | Rabbit  |
| Clonality:            | Polyclonal  |
| Immunogen:            | Prominin 2 / PROM2 antibody was raised against synthetic 16 amino acid peptide from N-terminus of human PROM2. Percent identity with other species by BLAST analysis: Human, Gorilla, Monkey, Marmoset (100%); Bovine, Horse (94%); Gibbon, Bat, Rabbit (88%); Hamster, Elephant (81%). |
| Formulation:          | PBS, 0.1% sodium azide.   |
| Concentration:        | lot specific  |
| Purification:         | Immunoaffinity purified   |
| Conjugation:          | Unconjugated  |
| Storage:              | Store at -20°C as received.   |
| Stability:            | Stable for 12 months from date of receipt.  |
| Gene Name:            | prominin 2  |
| Database Link:        | <a href="#">NP_653308</a><br><a href="#">Entrez Gene 150696 Human</a><br><a href="#">Q8N271</a>   |
| Synonyms:             | PROML2  |
| Protein Families:     | Transmembrane   |



[View online »](#)

**Product images:**

Anti-PROM2 antibody IHC of human lung, respiratory epithelium. Immunohistochemistry of formalin-fixed, paraffin-embedded tissue after heat-induced antigen retrieval.



Anti-PROM2 antibody IHC of human uterus. Immunohistochemistry of formalin-fixed, paraffin-embedded tissue after heat-induced antigen retrieval.