

## Product datasheet for **TA341316**

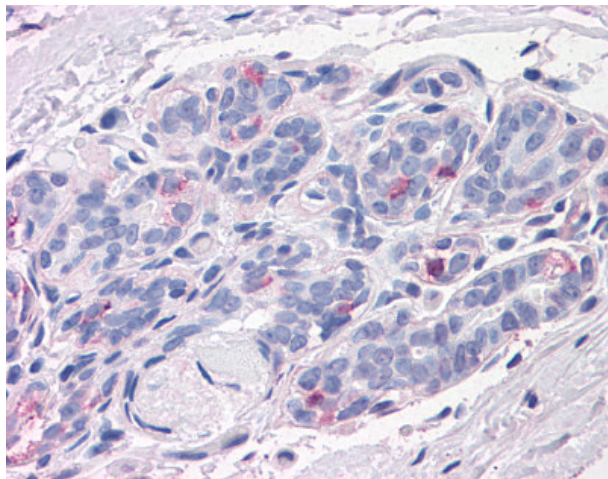
### NPTN Rabbit Polyclonal Antibody

#### Product data:

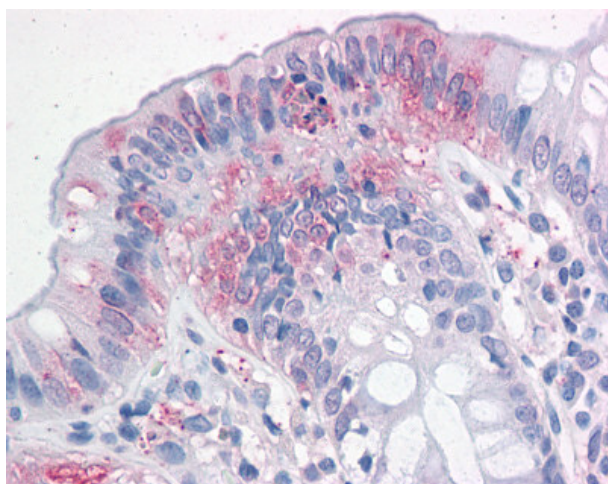
Product Type:	Primary Antibodies
Applications:	IHC
Recommended Dilution:	IHC-P (15 - 20 µg/ml)
Reactivity:	Human (Predicted: Rat)
Host:	Rabbit
Clonality:	Polyclonal
Immunogen:	NPTN / SDR1 antibody was raised against synthetic 16 amino acid peptide from N-terminus of human NPTN. Percent identity with other species by BLAST analysis: Human, Gorilla, Gibbon, Monkey, Marmoset, Rabbit (100%); Rat, Panda, Opossum (94%); Mouse, Bat, Dog, Bovine, Elephant, Pig (88%); Horse (81%).
Formulation:	PBS, 0.1% sodium azide.
Concentration:	lot specific
Purification:	Immunoaffinity purified
Conjugation:	Unconjugated
Storage:	Store at -20°C as received.
Stability:	Stable for 12 months from date of receipt.
Gene Name:	neuroplastin
Database Link:	<a href="#">NP_059429</a> <a href="#">Entrez Gene 56064 Rat</a> <a href="#">Entrez Gene 27020 Human</a> <a href="#">Q9Y639</a>
Synonyms:	GP55; GP65; np55; np65; SDFR1; SDR1
Protein Families:	Druggable Genome, Transmembrane



[View online »](#)

**Product images:**

Anti-NPTN antibody IHC of human breast. Immunohistochemistry of formalin-fixed, paraffin-embedded tissue after heat-induced antigen retrieval.



Anti-NPTN antibody IHC of human colon. Immunohistochemistry of formalin-fixed, paraffin-embedded tissue after heat-induced antigen retrieval.