

Product datasheet for **TA341313**

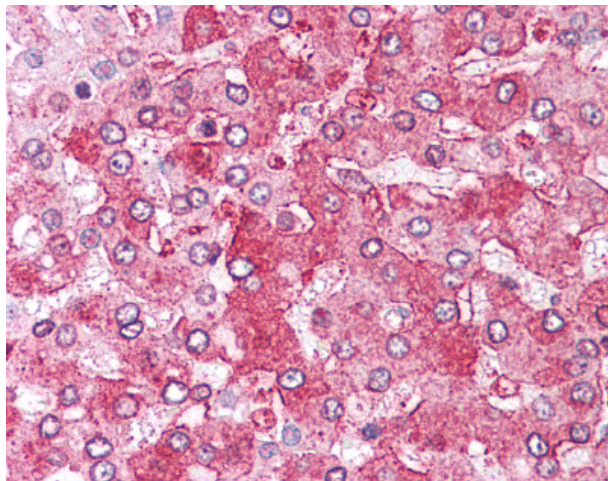
ARTS1 (ERAP1) Rabbit Polyclonal Antibody

Product data:

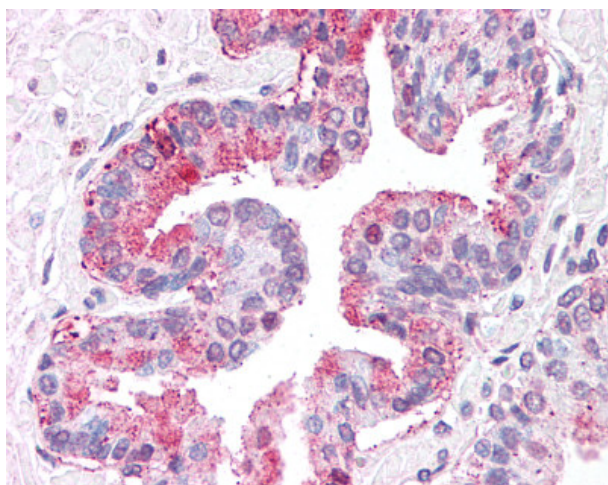
Product Type:	Primary Antibodies
Applications:	IHC
Recommended Dilution:	IHC-P (10 - 15 µg/ml)
Reactivity:	Human (Predicted: Monkey, Bovine, Dog, Horse, Pig)
Host:	Rabbit
Clonality:	Polyclonal
Immunogen:	ARTS1 / ERAP1 antibody was raised against synthetic 17 amino acid peptide from internal region of human ERAP1 / ARTS1. Percent identity with other species by BLAST analysis: Human, Chimpanzee, Gorilla, Orangutan, Gibbon, Monkey, Galago, Hamster (100%); Marmoset, Elephant, Panda, Dog, Bovine, Horse, Pig (94%); Mouse, Rat, Bat, Rabbit, Opossum, Guinea pig, Platypus (88%).
Formulation:	PBS, 0.1% sodium azide.
Concentration:	lot specific
Purification:	Immunoaffinity purified
Conjugation:	Unconjugated
Storage:	Store at -20°C as received.
Stability:	Stable for 12 months from date of receipt.
Gene Name:	endoplasmic reticulum aminopeptidase 1
Database Link:	NP_057526 Entrez Gene 488898 Dog Entrez Gene 699996 Monkey Entrez Gene 51752 Human Q9NZ08
Synonyms:	A-LAP; ALAP; APPILS; ARTS-1; ARTS1; ERAAP; ERAAP1; PILS-AP; PILSAP
Protein Families:	Druggable Genome, Protease, Secreted Protein



[View online »](#)

Product images:

Anti-ERAP1 / ARTS1 antibody IHC of human liver. Immunohistochemistry of formalin-fixed, paraffin-embedded tissue after heat-induced antigen retrieval.



Anti-ERAP1 / ARTS1 antibody IHC of human prostate. Immunohistochemistry of formalin-fixed, paraffin-embedded tissue after heat-induced antigen retrieval.