

Product datasheet for **TA341312**

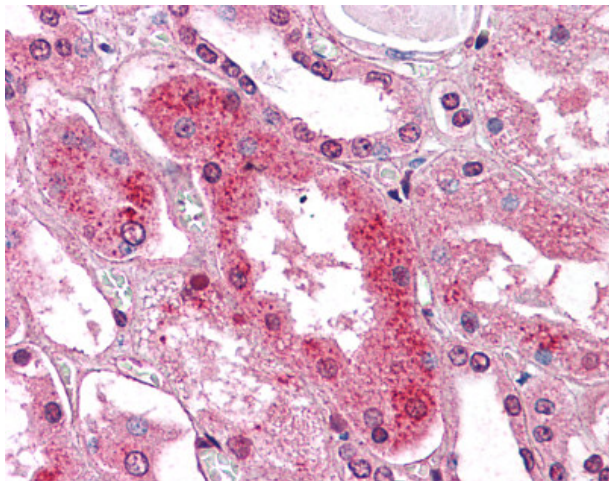
GM2A Rabbit Polyclonal Antibody

Product data:

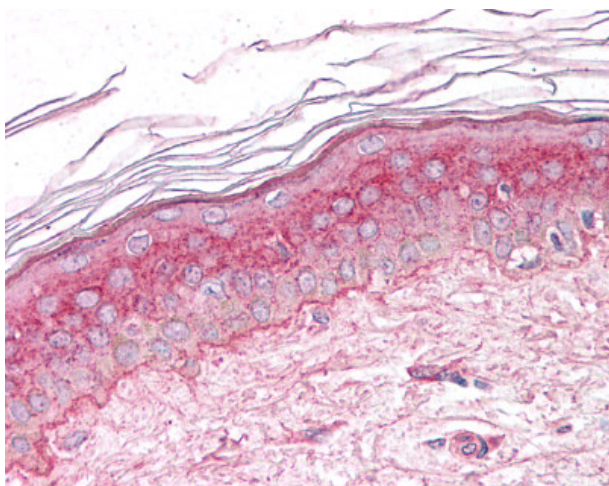
Product Type:	Primary Antibodies
Applications:	IHC
Recommended Dilution:	IHC-P (10 - 12.5 µg/ml)
Reactivity:	Human (Predicted: Monkey)
Host:	Rabbit
Clonality:	Polyclonal
Immunogen:	GM2A antibody was raised against synthetic 16 amino acid peptide from C-terminus of human GM2A. Percent identity with other species by BLAST analysis: Human, Gorilla, Gibbon (100%); Monkey (94%); Marmoset, Mouse, Rat, Bovine, Hamster, Elephant, Horse (81%).
Formulation:	PBS, 0.1% sodium azide.
Concentration:	lot specific
Purification:	Immunoaffinity purified
Conjugation:	Unconjugated
Storage:	Store at -20°C as received.
Stability:	Stable for 12 months from date of receipt.
Gene Name:	GM2 ganglioside activator
Database Link:	NP_000396 Entrez Gene 713375 Monkey Entrez Gene 2760 Human P17900
Synonyms:	GM2-AP; SAP-3
Protein Families:	Druggable Genome
Protein Pathways:	Lysosome



[View online »](#)

Product images:

Anti-GM2A antibody IHC of human kidney.
Immunohistochemistry of formalin-fixed,
paraffin-embedded tissue after heat-induced
antigen retrieval.



Anti-GM2A antibody IHC of human skin.
Immunohistochemistry of formalin-fixed,
paraffin-embedded tissue after heat-induced
antigen retrieval.