

## Product datasheet for **TA341309**

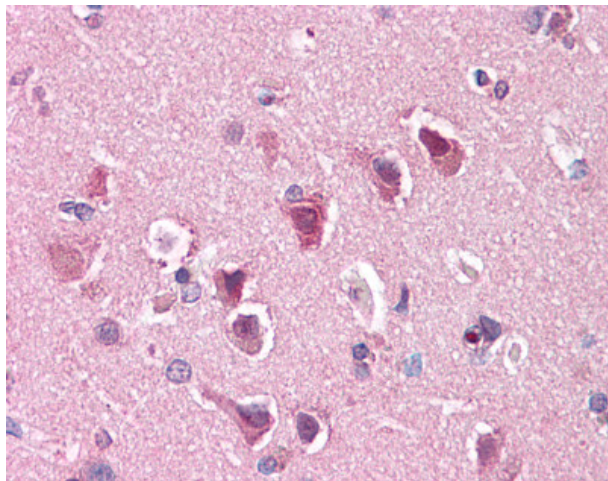
### ENT1 (SLC29A1) Rabbit Polyclonal Antibody

#### Product data:

Product Type:	Primary Antibodies
Applications:	IHC
Recommended Dilution:	IHC-P (10 - 12.5 µg/ml)
Reactivity:	Human (Predicted: Goat, Pig)
Host:	Rabbit
Clonality:	Polyclonal
Immunogen:	SLC29A1 / ENT1 antibody was raised against synthetic 15 amino acid peptide from C-terminus of human ENT1. Percent identity with other species by BLAST analysis: Human, Gorilla, Orangutan, Gibbon, Monkey, Marmoset, Mouse, Rat, Dog, Bat, Bovine, Hamster, Elephant, Panda, Horse, Rabbit (100%); Goat, Pig (93%); Opossum, Pufferfish, Zebrafish, Stickleback (87%); Chicken, Xenopus (80%).
Formulation:	PBS, 0.1% sodium azide.
Concentration:	lot specific
Purification:	Immunoaffinity purified
Conjugation:	Unconjugated
Storage:	Store at -20°C as received.
Stability:	Stable for 12 months from date of receipt.
Gene Name:	solute carrier family 29 member 1 (Augustine blood group)
Database Link:	<a href="#">NP_001071642</a> <a href="#">Entrez Gene 2030 Human</a> <a href="#">Q99808</a>
Synonyms:	ENT1
Protein Families:	Transmembrane



[View online »](#)

**Product images:**

Anti-ENT1 antibody IHC of human brain, cortex. Immunohistochemistry of formalin-fixed, paraffin-embedded tissue after heat-induced antigen retrieval.