

Product datasheet for **TA341306**

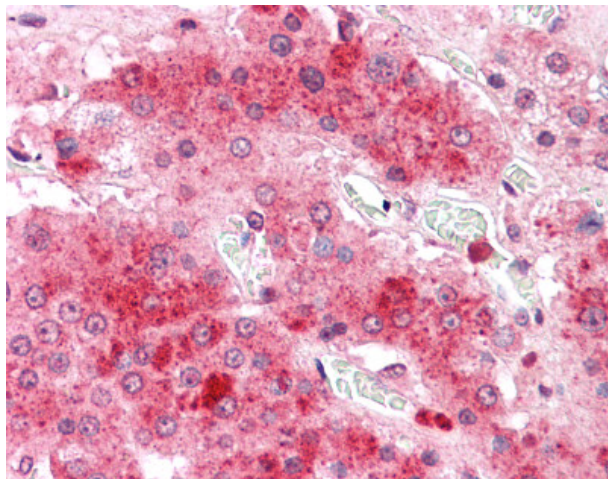
COMT Rabbit Polyclonal Antibody

Product data:

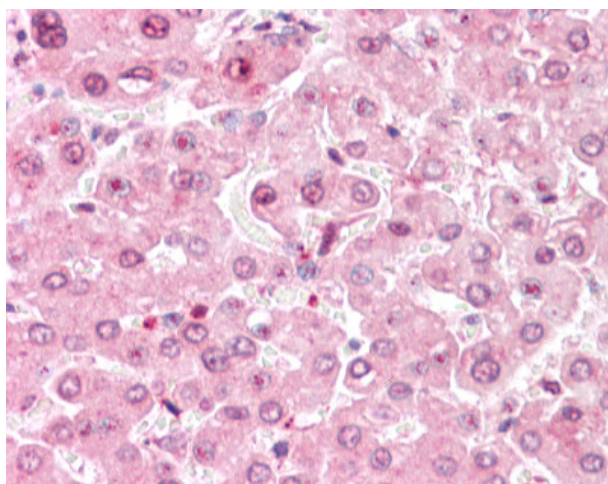
Product Type:	Primary Antibodies
Applications:	IHC
Recommended Dilution:	IHC-P (5 - 7.5 µg/ml)
Reactivity:	Human (Predicted: Monkey)
Host:	Rabbit
Clonality:	Polyclonal
Immunogen:	COMT antibody was raised against synthetic 19 amino acid peptide from C-terminus of human COMT. Percent identity with other species by BLAST analysis: Human, Gorilla (100%); Monkey (95%); Hamster, Rabbit (84%).
Formulation:	PBS, 0.1% sodium azide.
Concentration:	lot specific
Purification:	Immunoaffinity purified
Conjugation:	Unconjugated
Storage:	Store at -20°C as received.
Stability:	Stable for 12 months from date of receipt.
Gene Name:	catechol-O-methyltransferase
Database Link:	NP_000745 Entrez Gene 712548 Monkey Entrez Gene 1312 Human P21964
Synonyms:	HEL-S-98n
Protein Families:	Druggable Genome, Transmembrane
Protein Pathways:	Metabolic pathways, Tyrosine metabolism



[View online »](#)

Product images:

Anti-COMT antibody IHC of human adrenal.
Immunohistochemistry of formalin-fixed,
paraffin-embedded tissue after heat-induced
antigen retrieval.



Anti-COMT antibody IHC of human liver.
Immunohistochemistry of formalin-fixed,
paraffin-embedded tissue after heat-induced
antigen retrieval.