

## Product datasheet for **TA341304**

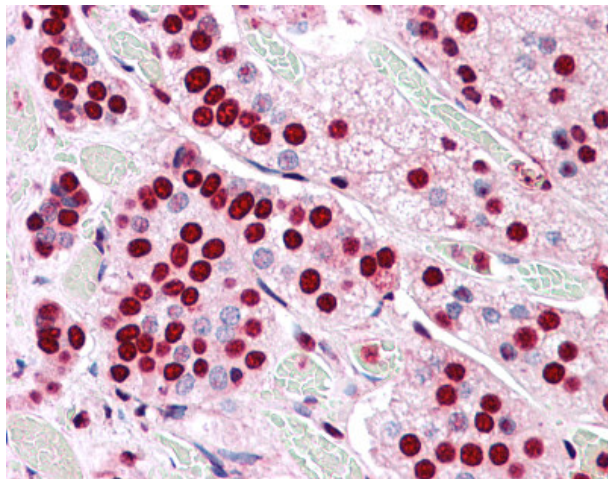
### COMT Rabbit Polyclonal Antibody

#### Product data:

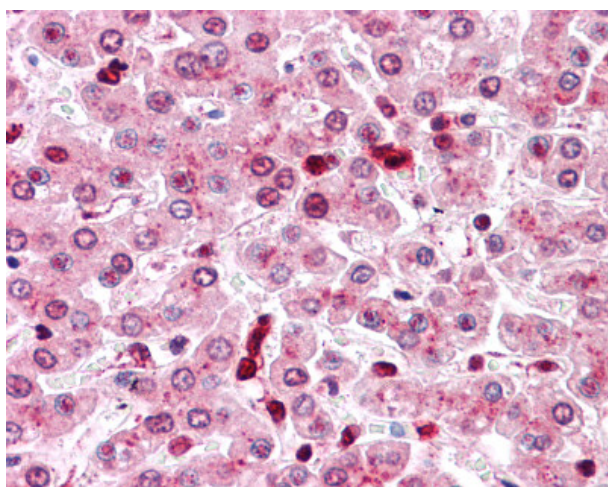
Product Type:	Primary Antibodies
Applications:	IHC
Recommended Dilution:	IHC-P (2.5 - 5 µg/ml)
Reactivity:	Human (Predicted: Hamster, Horse, Rabbit)
Host:	Rabbit
Clonality:	Polyclonal
Immunogen:	COMT antibody was raised against synthetic 15 amino acid peptide from internal region of human COMT. Percent identity with other species by BLAST analysis: Human, Gorilla, Gibbon, Monkey, Marmoset, Mouse, Rat, Bat, Bovine, Pig (100%); Hamster, Elephant, Panda, Rabbit, Horse (93%); Dog, Turkey, Chicken, Xenopus (87%).
Formulation:	PBS, 0.1% sodium azide.
Concentration:	lot specific
Purification:	Immunoaffinity purified
Conjugation:	Unconjugated
Storage:	Store at -20°C as received.
Stability:	Stable for 12 months from date of receipt.
Gene Name:	catechol-O-methyltransferase
Database Link:	<a href="#">NP_000745</a> <a href="#">Entrez Gene 1312 Human P21964</a>
Synonyms:	HEL-S-98n
Protein Families:	Druggable Genome, Transmembrane
Protein Pathways:	Metabolic pathways, Tyrosine metabolism



[View online »](#)

**Product images:**

Anti-COMT antibody IHC of human adrenal. Immunohistochemistry of formalin-fixed, paraffin-embedded tissue after heat-induced antigen retrieval.



Anti-COMT antibody IHC of human liver. Immunohistochemistry of formalin-fixed, paraffin-embedded tissue after heat-induced antigen retrieval.