

## Product datasheet for **TA341303**

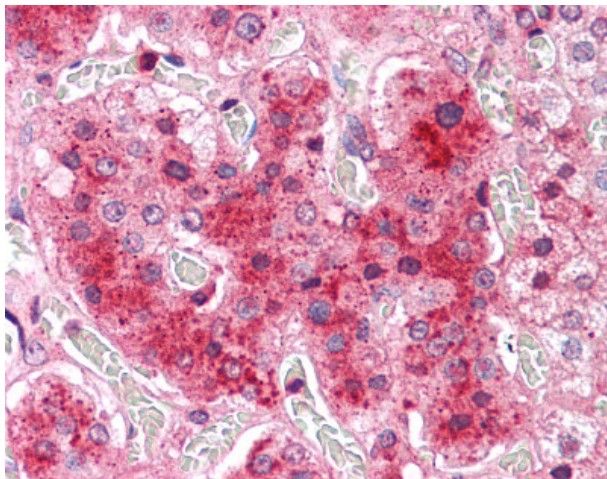
### COMT Rabbit Polyclonal Antibody

#### Product data:

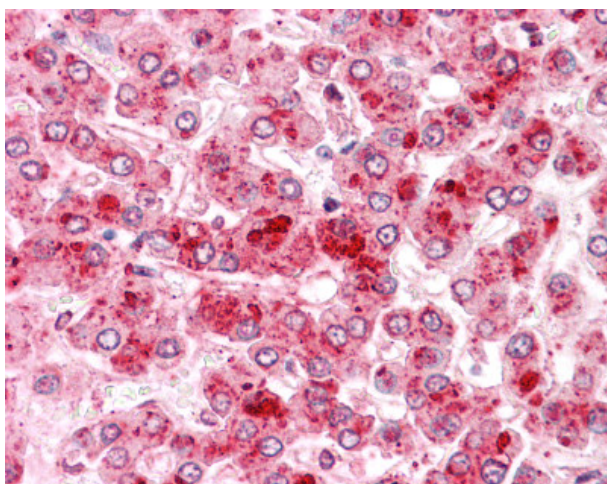
Product Type:	Primary Antibodies
Applications:	IHC
Recommended Dilution:	IHC-P (5 µg/ml)
Reactivity:	Human (Predicted: Monkey)
Host:	Rabbit
Clonality:	Polyclonal
Immunogen:	COMT antibody was raised against synthetic 19 amino acid peptide from N-terminus of human COMT. Percent identity with other species by BLAST analysis: Human, Gorilla (100%); Gibbon, Monkey (95%); Marmoset (89%); Hamster (84%).
Formulation:	PBS, 0.1% sodium azide.
Concentration:	lot specific
Purification:	Immunoaffinity purified
Conjugation:	Unconjugated
Storage:	Store at -20°C as received.
Stability:	Stable for 12 months from date of receipt.
Gene Name:	catechol-O-methyltransferase
Database Link:	<a href="#">NP_000745</a> <a href="#">Entrez Gene 712548 Monkey</a> <a href="#">Entrez Gene 1312 Human</a> <a href="#">P21964</a>
Synonyms:	HEL-S-98n
Protein Families:	Druggable Genome, Transmembrane
Protein Pathways:	Metabolic pathways, Tyrosine metabolism



[View online »](#)

**Product images:**

Anti-COMT antibody IHC of human adrenal.  
Immunohistochemistry of formalin-fixed,  
paraffin-embedded tissue after heat-induced  
antigen retrieval.



Anti-COMT antibody IHC of human liver.  
Immunohistochemistry of formalin-fixed,  
paraffin-embedded tissue after heat-induced  
antigen retrieval.