

Product datasheet for **TA341301**

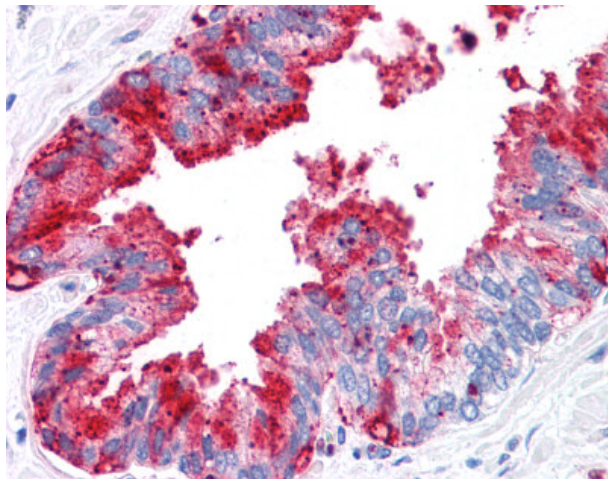
ADAM20 Rabbit Polyclonal Antibody

Product data:

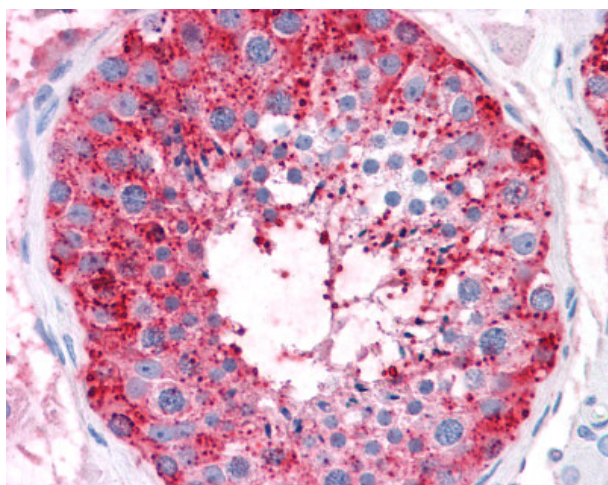
Product Type:	Primary Antibodies
Applications:	IHC
Recommended Dilution:	IHC-P (10 µg/ml)
Reactivity:	Human
Host:	Rabbit
Clonality:	Polyclonal
Immunogen:	ADAM20 antibody was raised against synthetic 15 amino acid peptide from internal region of human ADAM20. Percent identity with other species by BLAST analysis: Human, Gorilla, Gibbon (100%).
Formulation:	PBS, 0.1% sodium azide.
Concentration:	lot specific
Purification:	Immunoaffinity purified
Conjugation:	Unconjugated
Storage:	Store at -20°C as received.
Stability:	Stable for 12 months from date of receipt.
Gene Name:	ADAM metallopeptidase domain 20
Database Link:	NP_003805 Entrez Gene 8748 Human O43506
Synonyms:	ADAM metallopeptidase domain 20; a disintegrin and metalloproteinase domain 20
Protein Families:	Druggable Genome, Protease, Transmembrane



[View online »](#)

Product images:

Anti-ADAM20 antibody IHC of human prostate. Immunohistochemistry of formalin-fixed, paraffin-embedded tissue after heat-induced antigen retrieval.



Anti-ADAM20 antibody IHC of human testis. Immunohistochemistry of formalin-fixed, paraffin-embedded tissue after heat-induced antigen retrieval.