

Product datasheet for **TA341300**

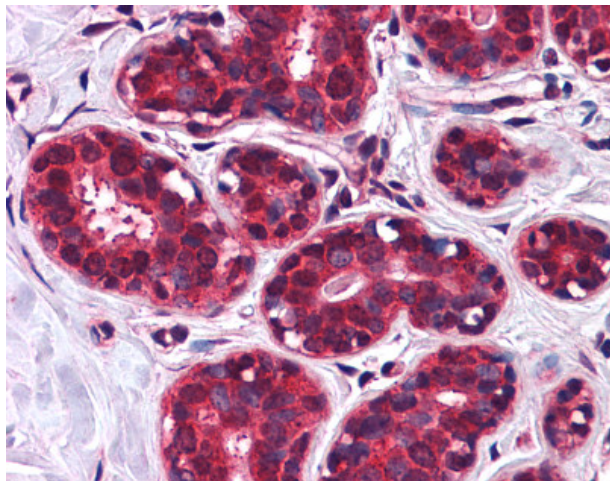
SLC5A6 Rabbit Polyclonal Antibody

Product data:

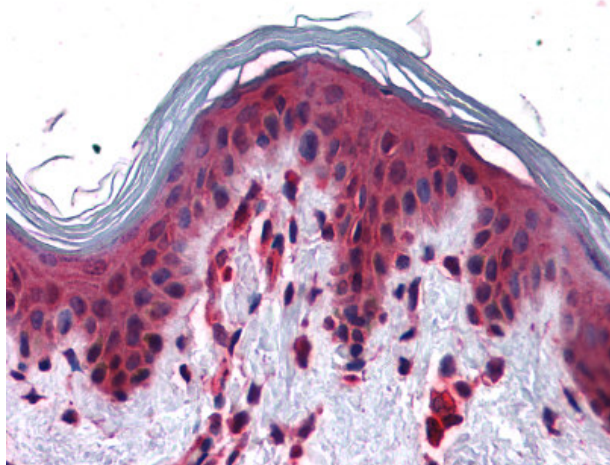
Product Type:	Primary Antibodies
Applications:	IHC
Recommended Dilution:	IHC-P (10 - 15 µg/ml)
Reactivity:	Human (Predicted: Monkey, Bat, Dog, Horse)
Host:	Rabbit
Clonality:	Polyclonal
Immunogen:	SLC5A6 / SMVT antibody was raised against synthetic 18 amino acid peptide from internal region of human SLC5A6. Percent identity with other species by BLAST analysis: Human, Gorilla (100%); Monkey, Marmoset, Dog, Bat, Horse, Platypus (94%); Rat, Bovine, Elephant, Panda, Rabbit, Pig (89%); Mouse, Opossum (83%).
Formulation:	PBS, 0.1% sodium azide.
Concentration:	lot specific
Purification:	Immunoaffinity purified
Conjugation:	Unconjugated
Storage:	Store at -20°C as received.
Stability:	Stable for 12 months from date of receipt.
Gene Name:	solute carrier family 5 member 6
Database Link:	NP_066918 Entrez Gene 475698 Dog Entrez Gene 699074 Monkey Entrez Gene 8884 Human Q9Y289
Synonyms:	SMVT
Protein Families:	Transmembrane



[View online »](#)

Product images:

Anti-SLC5A6 antibody IHC of human breast. Immunohistochemistry of formalin-fixed, paraffin-embedded tissue after heat-induced antigen retrieval.



Anti-SLC5A6 antibody IHC of human skin. Immunohistochemistry of formalin-fixed, paraffin-embedded tissue after heat-induced antigen retrieval.