

Product datasheet for **TA341298**

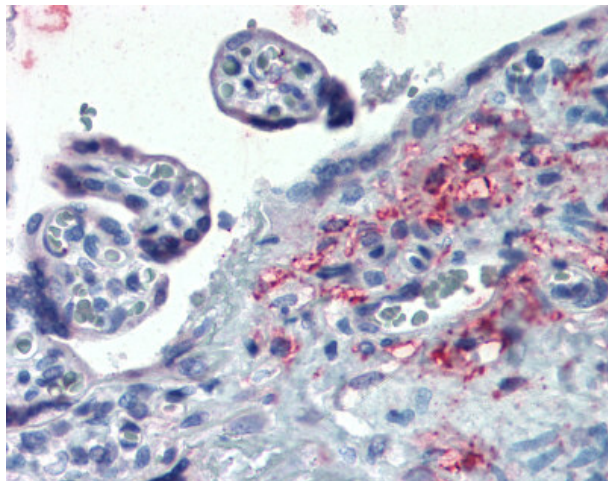
TXNDC4 (ERP44) Rabbit Polyclonal Antibody

Product data:

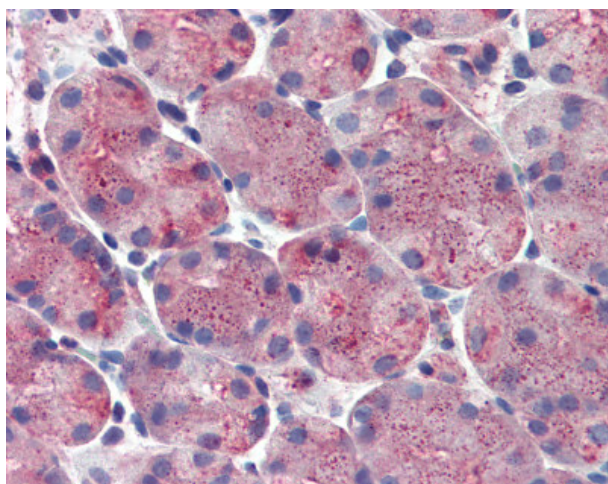
Product Type:	Primary Antibodies
Applications:	IHC
Recommended Dilution:	IHC-P (10 - 15 µg/ml)
Reactivity:	Human (Predicted: Rat, Bovine, Dog, Hamster, Horse, Rabbit, Chicken)
Host:	Rabbit
Clonality:	Polyclonal
Immunogen:	ERP44 antibody was raised against synthetic 19 amino acid peptide from internal region of human ERP44 / TXNDC4. Percent identity with other species by BLAST analysis: Human, Gorilla, Gibbon, Monkey, Marmoset (100%); Rat, Dog, Bovine, Hamster, Panda, Rabbit, Horse, Opossum, Turkey, Chicken, Platypus (95%); Mouse, Pig, Lizard (89%); Elephant (84%).
Formulation:	PBS, 0.1% sodium azide.
Concentration:	lot specific
Purification:	Immunoaffinity purified
Conjugation:	Unconjugated
Storage:	Store at -20°C as received.
Stability:	Stable for 12 months from date of receipt.
Gene Name:	endoplasmic reticulum protein 44
Database Link:	NP_055866 Entrez Gene 298066 Rat Entrez Gene 474781 Dog Entrez Gene 23071 Human Q9BS26
Synonyms:	PDIA10; TXNDC4
Protein Families:	Druggable Genome



[View online »](#)

Product images:

Anti-ERP44 / TXNDC4 antibody IHC of human placenta. Immunohistochemistry of formalin-fixed, paraffin-embedded tissue after heat-induced antigen retrieval.



Anti-ERP44 / TXNDC4 antibody IHC of human stomach. Immunohistochemistry of formalin-fixed, paraffin-embedded tissue after heat-induced antigen retrieval.