

## Product datasheet for **TA341296**

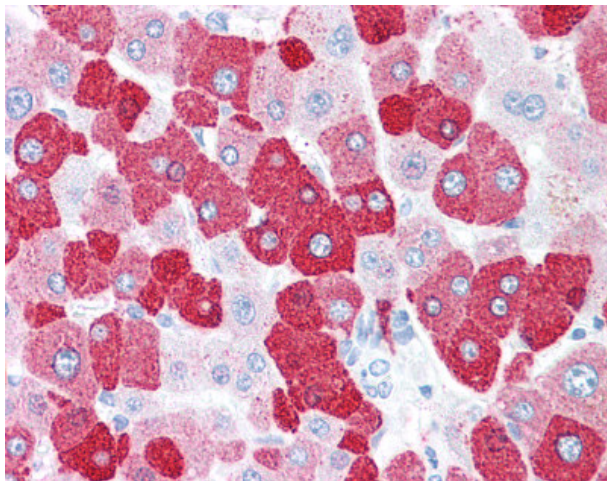
### LOXL2 Rabbit Polyclonal Antibody

#### Product data:

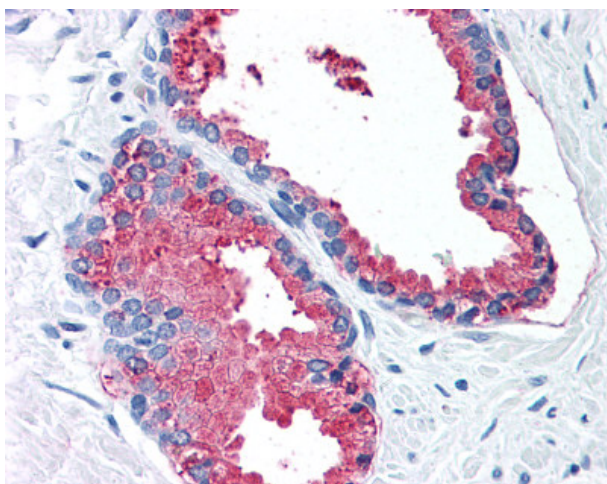
Product Type:	Primary Antibodies
Applications:	IHC
Recommended Dilution:	IHC-P (15 µg/ml)
Reactivity:	Human (Predicted: Bat)
Host:	Rabbit
Clonality:	Polyclonal
Immunogen:	LOXL2 antibody was raised against synthetic 20 amino acid peptide from internal region of human LOXL2. Percent identity with other species by BLAST analysis: Human, Gorilla, Orangutan, Monkey, Galago, Marmoset, Mouse, Rat, Elephant, Panda, Dog, Bovine, Horse, Rabbit, Guinea pig (100%); Bat (95%).
Formulation:	PBS, 0.1% sodium azide.
Concentration:	lot specific
Purification:	Immunoaffinity purified
Conjugation:	Unconjugated
Storage:	Store at -20°C as received.
Stability:	Stable for 12 months from date of receipt.
Gene Name:	lysyl oxidase like 2
Database Link:	<a href="#">NP_002309</a> <a href="#">Entrez Gene 4017 Human</a> <a href="#">Q9Y4K0</a>
Synonyms:	LOR2; WS9-14
Protein Families:	Druggable Genome, Secreted Protein



[View online »](#)

**Product images:**

Anti-LOXL2 antibody IHC of human liver. Immunohistochemistry of formalin-fixed, paraffin-embedded tissue after heat-induced antigen retrieval.



Anti-LOXL2 antibody IHC of human prostate. Immunohistochemistry of formalin-fixed, paraffin-embedded tissue after heat-induced antigen retrieval.