

Product datasheet for **TA341295**

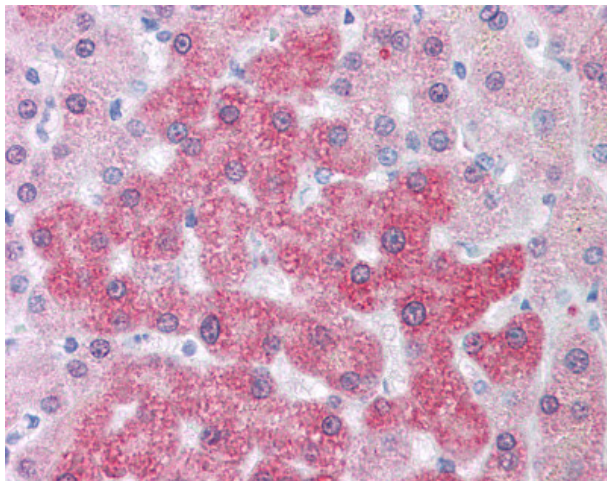
LOXL2 Rabbit Polyclonal Antibody

Product data:

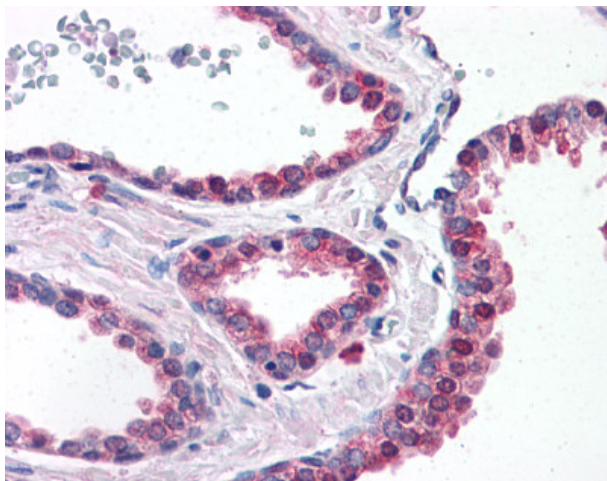
Product Type:	Primary Antibodies
Applications:	IHC
Recommended Dilution:	IHC-P (15 µg/ml)
Reactivity:	Human (Predicted: Monkey, Bat, Bovine)
Host:	Rabbit
Clonality:	Polyclonal
Immunogen:	LOXL2 antibody was raised against synthetic 17 amino acid peptide from internal region of human LOXL2. Percent identity with other species by BLAST analysis: Human, Marmoset (100%); Gorilla, Orangutan, Monkey, Bovine, Bat, Elephant (94%); Dog, Panda, Horse, Opossum (88%); Mouse, Rat, Turkey, Chicken, Platypus (82%).
Formulation:	PBS, 0.1% sodium azide.
Concentration:	lot specific
Purification:	Immunoaffinity purified
Conjugation:	Unconjugated
Storage:	Store at -20°C as received.
Stability:	Stable for 12 months from date of receipt.
Gene Name:	lysyl oxidase like 2
Database Link:	NP_002309 Entrez Gene 710151 Monkey Entrez Gene 4017 Human Q9Y4K0
Synonyms:	LOR2; WS9-14
Protein Families:	Druggable Genome, Secreted Protein



[View online »](#)

Product images:

Anti-LOXL2 antibody IHC of human liver.
Immunohistochemistry of formalin-fixed,
paraffin-embedded tissue after heat-induced
antigen retrieval.



Anti-LOXL2 antibody IHC of human prostate.
Immunohistochemistry of formalin-fixed,
paraffin-embedded tissue after heat-induced
antigen retrieval.