

Product datasheet for **TA341292**

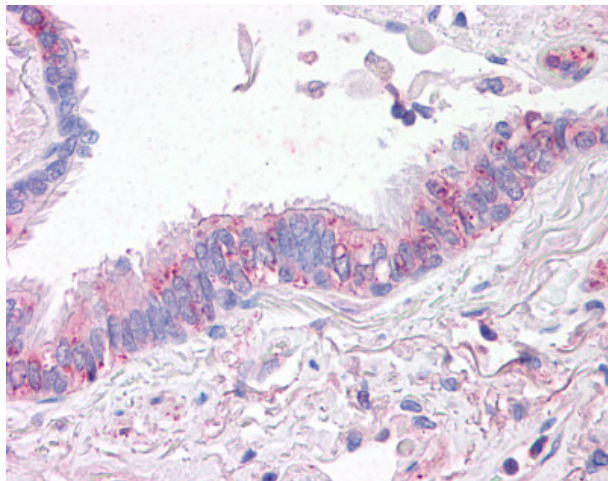
SLC31A1 Rabbit Polyclonal Antibody

Product data:

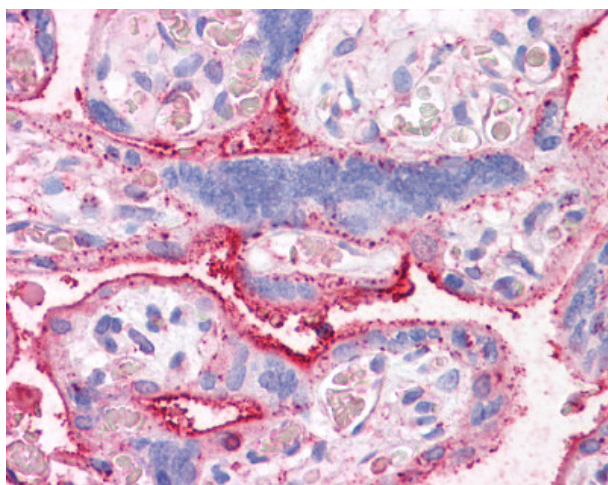
Product Type:	Primary Antibodies
Applications:	IHC
Recommended Dilution:	IHC-P (15 µg/ml)
Reactivity:	Human (Predicted: Mouse, Rat, Bovine, Hamster, Horse, Pig, Chicken)
Host:	Rabbit
Clonality:	Polyclonal
Immunogen:	SLC31A1 / CTR1 antibody was raised against synthetic 16 amino acid peptide from internal region of human CTR1. Percent identity with other species by BLAST analysis: Human, Gorilla, Orangutan, Gibbon, Monkey, Marmoset, Dog, Elephant, Panda, Rabbit, Opossum, Platypus (100%); Mouse, Rat, Bovine, Hamster, Horse, Pig, Turkey, Chicken (94%); Xenopus (88%); Pufferfish (81%).
Formulation:	PBS, 0.1% sodium azide.
Concentration:	lot specific
Purification:	Immunoaffinity purified
Conjugation:	Unconjugated
Storage:	Store at -20°C as received.
Stability:	Stable for 12 months from date of receipt.
Gene Name:	solute carrier family 31 member 1
Database Link:	NP_001850 Entrez Gene 20529 Mouse Entrez Gene 171135 Rat Entrez Gene 1317 Human O15431
Synonyms:	COPT1; CTR1
Protein Families:	Transmembrane



[View online »](#)

Product images:

Anti-CTR1 antibody IHC of human lung, respiratory epithelium. Immunohistochemistry of formalin-fixed, paraffin-embedded tissue after heat-induced antigen retrieval.



Anti-CTR1 antibody IHC of human placenta. Immunohistochemistry of formalin-fixed, paraffin-embedded tissue after heat-induced antigen retrieval.