

Product datasheet for **TA341289**

NKCC1 (SLC12A2) Rabbit Polyclonal Antibody

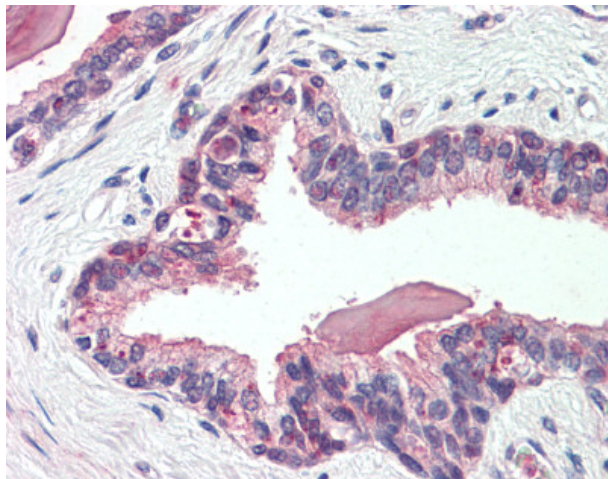
Product data:

Product Type:	Primary Antibodies
Applications:	IHC
Recommended Dilution:	IHC-P (5 - 10 µg/ml)
Reactivity:	Human (Predicted: Bat)
Host:	Rabbit
Clonality:	Polyclonal
Immunogen:	SLC12A2 / NKCC1 antibody was raised against synthetic 15 amino acid peptide from internal region of human SLC12A2 / NKCC1. Percent identity with other species by BLAST analysis: Human, Chimpanzee, Gorilla, Orangutan, Gibbon, Monkey, Marmoset, Mouse, Rat, Ferret, Elephant, Panda, Bovine, Dog, Horse, Pig, Opossum, Guinea pig (100%); Bat (93%).
Formulation:	PBS, 0.1% sodium azide.
Concentration:	lot specific
Purification:	Immunoaffinity purified
Conjugation:	Unconjugated
Storage:	Store at -20°C as received.
Stability:	Stable for 12 months from date of receipt.
Gene Name:	solute carrier family 12 member 2
Database Link:	NP_001037 Entrez Gene 6558 Human P55011
Synonyms:	BSC; BSC2; NKCC1; PPP1R141
Protein Families:	Druggable Genome, Transmembrane
Protein Pathways:	Vibrio cholerae infection

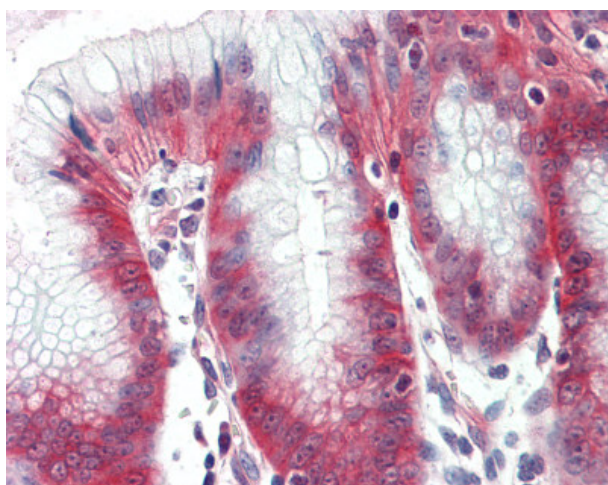


[View online »](#)

Product images:



Human, Prostate: Formalin-Fixed Paraffin-Embedded (FFPE)



Human, Stomach: Formalin-Fixed Paraffin-Embedded (FFPE)