

Product datasheet for **TA341287**

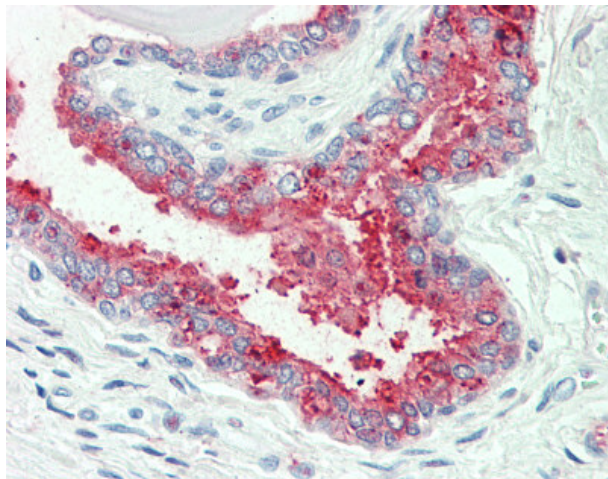
NKCC1 (SLC12A2) Rabbit Polyclonal Antibody

Product data:

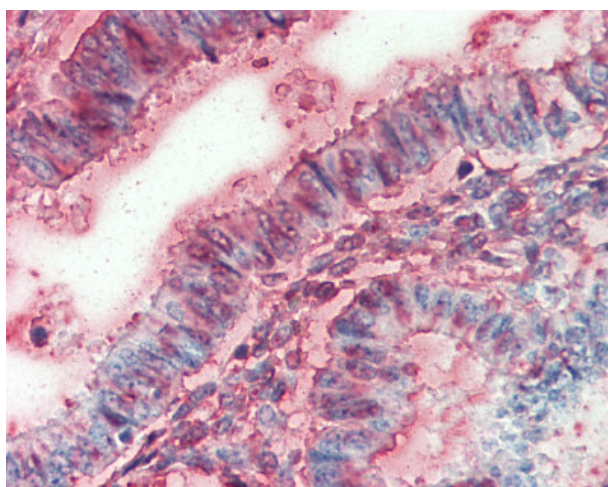
Product Type:	Primary Antibodies
Applications:	IHC
Recommended Dilution:	IHC-P (7.5 - 10 µg/ml)
Reactivity:	Human
Host:	Rabbit
Clonality:	Polyclonal
Immunogen:	SLC12A2 / NKCC1 antibody was raised against synthetic 18 amino acid peptide from internal region of human SLC12A2 / NKCC1. Percent identity with other species by BLAST analysis: Human, Gorilla, Gibbon, Monkey, Marmoset (100%); Bovine, Pig (89%); Ferret, Dog, Bat, Panda (83%).
Formulation:	PBS, 0.1% sodium azide.
Concentration:	lot specific
Purification:	Immunoaffinity purified
Conjugation:	Unconjugated
Storage:	Store at -20°C as received.
Stability:	Stable for 12 months from date of receipt.
Gene Name:	solute carrier family 12 member 2
Database Link:	NP_001037 Entrez Gene 6558 Human P55011
Synonyms:	BSC; BSC2; NKCC1; PPP1R141
Protein Families:	Druggable Genome, Transmembrane
Protein Pathways:	Vibrio cholerae infection



[View online »](#)

Product images:

Anti-SLC12A2 / NKCC1 antibody IHC of human prostate. Immunohistochemistry of formalin-fixed, paraffin-embedded tissue after heat-induced antigen retrieval.



Anti-SLC12A2 / NKCC1 antibody IHC of human uterus. Immunohistochemistry of formalin-fixed, paraffin-embedded tissue after heat-induced antigen retrieval.