

## Product datasheet for **TA341277**

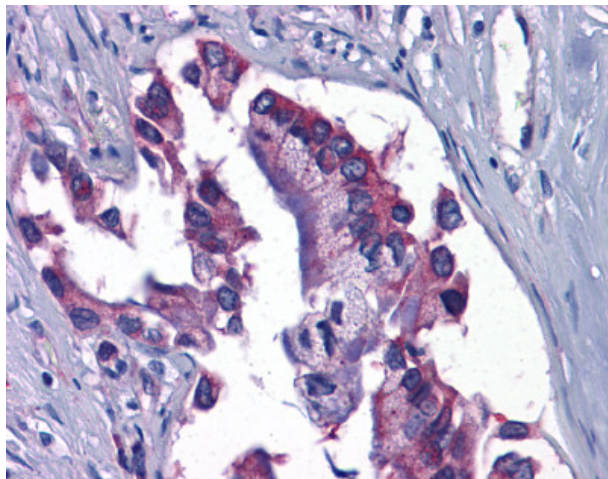
### GFPT1 Rabbit Polyclonal Antibody

#### Product data:

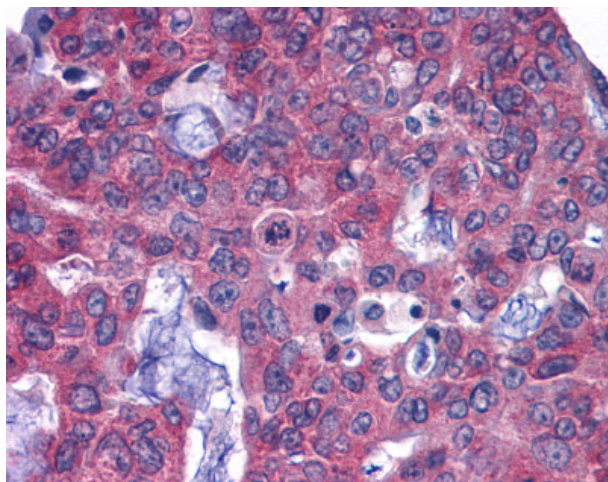
Product Type:	Primary Antibodies
Applications:	IHC
Recommended Dilution:	IHC-P (2.5 - 5 µg/ml)
Reactivity:	Human (Predicted: Bat, Dog)
Host:	Rabbit
Clonality:	Polyclonal
Immunogen:	GFPT1 / GFAT antibody was raised against synthetic 14 amino acid peptide from C-Terminus of human GFPT1. Percent identity with other species by BLAST analysis: Human, Chimpanzee, Gorilla, Orangutan, Gibbon, Monkey, Galago, Marmoset, Mouse, Rat, Elephant, Bovine, Horse, Pig, Opossum, Guinea pig (100%); Dog, Bat (93%); Turkey, Zebra finch, Chicken (86%).
Formulation:	PBS, 0.1% sodium azide.
Concentration:	lot specific
Purification:	Immunoaffinity purified
Conjugation:	Unconjugated
Storage:	Store at -20°C as received.
Stability:	Stable for 12 months from date of receipt.
Gene Name:	glutamine--fructose-6-phosphate transaminase 1
Database Link:	<a href="#">NP_002047</a> <a href="#">Entrez Gene 474624 Dog</a> <a href="#">Entrez Gene 2673 Human</a> <a href="#">Q06210</a>
Synonyms:	CMSTA1; GFA; GFAT; GFAT 1; GFAT1; GFAT1m; GFPT; GFPT1L; MSLG
Protein Families:	Protease
Protein Pathways:	Alanine, aspartate and glutamate metabolism, Amino sugar and nucleotide sugar metabolism, Metabolic pathways



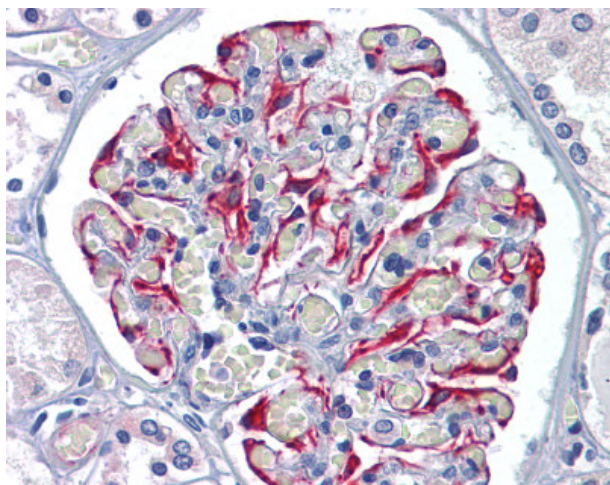
[View online »](#)

**Product images:**

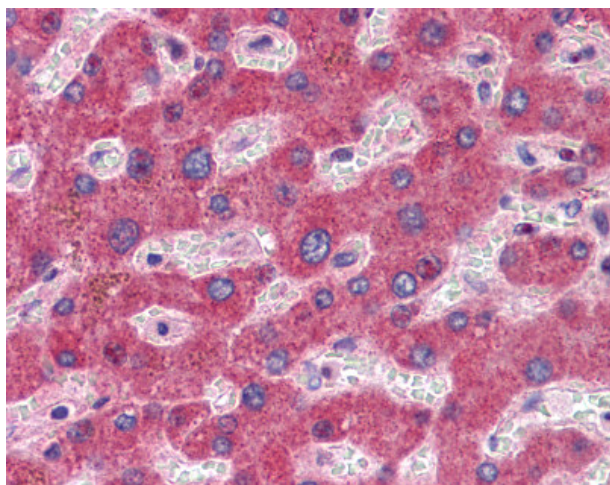
Anti-GFPT1 / GFAT antibody IHC of human Pancreas, Carcinoma. Immunohistochemistry of formalin-fixed, paraffin-embedded tissue after heat-induced antigen retrieval.



Anti-GFPT1 / GFAT antibody IHC of human Colon, Carcinoma. Immunohistochemistry of formalin-fixed, paraffin-embedded tissue after heat-induced antigen retrieval.



Anti-GFPT1 antibody IHC of human kidney. Immunohistochemistry of formalin-fixed, paraffin-embedded tissue after heat-induced antigen retrieval.



Anti-GFPT1 antibody IHC of human liver. Immunohistochemistry of formalin-fixed, paraffin-embedded tissue after heat-induced antigen retrieval.