

## Product datasheet for **TA341275**

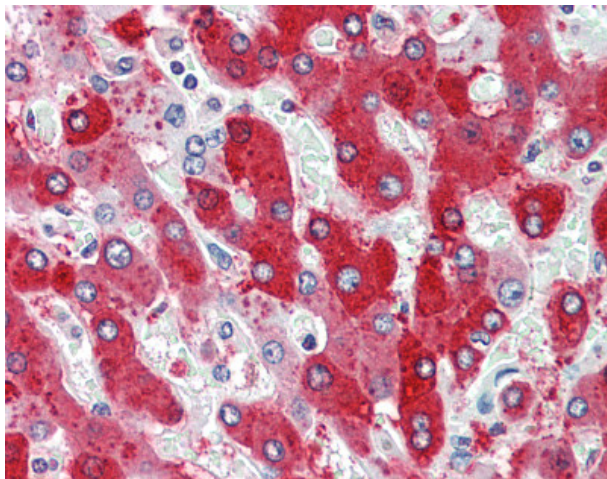
### CDCP1 Rabbit Polyclonal Antibody

#### Product data:

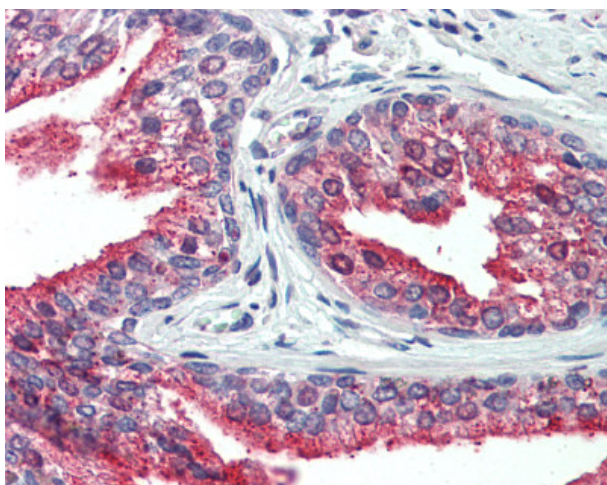
Product Type:	Primary Antibodies
Applications:	IHC
Recommended Dilution:	IHC-P (5 - 10 µg/ml)
Reactivity:	Human (Predicted: Monkey)
Host:	Rabbit
Clonality:	Polyclonal
Immunogen:	CDCP1 antibody was raised against synthetic 15 amino acid peptide from N-Terminus of human CDCP1. Percent identity with other species by BLAST analysis: Human, Gorilla, Orangutan, Gibbon, Marmoset (100%); Chimpanzee, Monkey (93%).
Formulation:	PBS, 0.1% sodium azide.
Concentration:	lot specific
Purification:	Immunoaffinity purified
Conjugation:	Unconjugated
Storage:	Store at -20°C as received.
Stability:	Stable for 12 months from date of receipt.
Gene Name:	CUB domain containing protein 1
Database Link:	<a href="#">NP_073753</a> <a href="#">Entrez Gene 714333 Monkey</a> <a href="#">Entrez Gene 64866 Human</a> <a href="#">Q9H5V8</a>
Synonyms:	CD318; SIMA135; TRASK
Protein Families:	ES Cell Differentiation/IPS, Transmembrane



[View online »](#)

**Product images:**

Human, Liver: Formalin-Fixed Paraffin-Embedded (FFPE)



Human, Prostate: Formalin-Fixed Paraffin-Embedded (FFPE)