

Product datasheet for **TA341274**

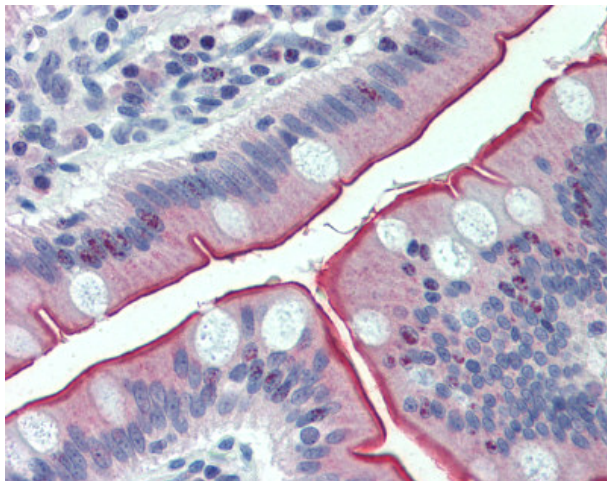
MUPCDH (CDHR5) Rabbit Polyclonal Antibody

Product data:

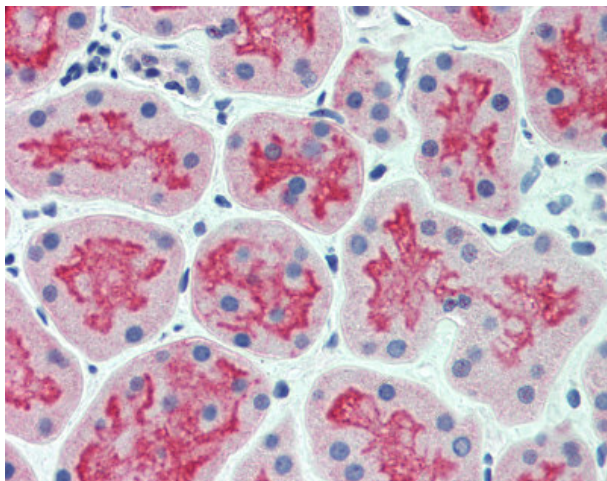
Product Type:	Primary Antibodies
Applications:	IHC
Recommended Dilution:	IHC-P (10 µg/ml)
Reactivity:	Human (Predicted: Monkey)
Host:	Rabbit
Clonality:	Polyclonal
Immunogen:	CDHR5 / MUCDHL antibody was raised against synthetic 17 amino acid peptide from internal region of human CDHR5 / MUPCDH. Percent identity with other species by BLAST analysis: Human (100%); Monkey, Panda (94%); Gorilla, Orangutan, Marmoset (88%); Mouse, Horse (82%).
Formulation:	PBS, 0.1% sodium azide.
Concentration:	lot specific
Purification:	Immunoaffinity purified
Conjugation:	Unconjugated
Storage:	Store at -20°C as received.
Stability:	Stable for 12 months from date of receipt.
Gene Name:	cadherin related family member 5
Database Link:	NP_001165439 Entrez Gene 699464 Monkey Entrez Gene 53841 Human Q9HBB8
Synonyms:	MLPCDH; MU-PCDH; MUCDHL; MUPCDH
Protein Families:	Transmembrane



[View online »](#)

Product images:

Anti-CDHR5 / MUPCDH antibody IHC of human small intestine. Immunohistochemistry of formalin-fixed, paraffin-embedded tissue after heat-induced antigen retrieval.



Anti-CDHR5 / MUPCDH antibody IHC of human kidney. Immunohistochemistry of formalin-fixed, paraffin-embedded tissue after heat-induced antigen retrieval.