

Product datasheet for **TA341269**

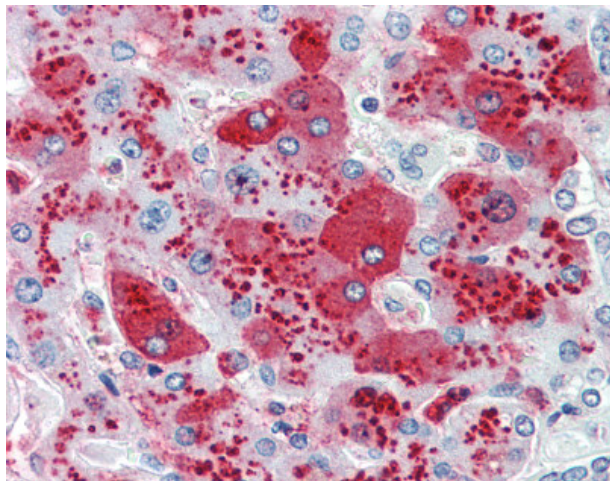
CDCP1 Rabbit Polyclonal Antibody

Product data:

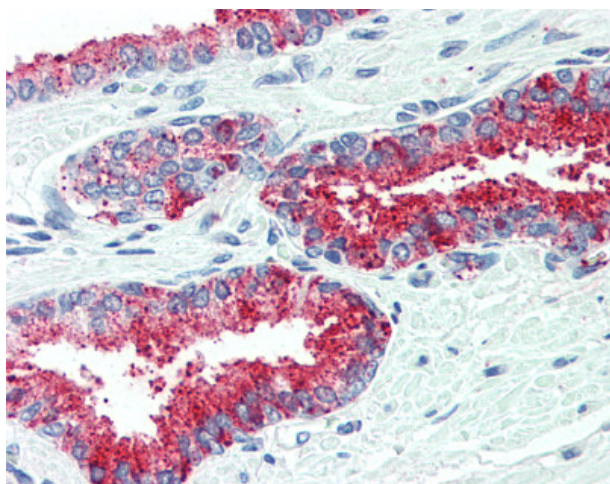
Product Type:	Primary Antibodies
Applications:	IHC
Recommended Dilution:	IHC-P (15 µg/ml)
Reactivity:	Human (Predicted: Mouse, Dog, Horse, Pig, Rabbit)
Host:	Rabbit
Clonality:	Polyclonal
Immunogen:	CDCP1 antibody was raised against synthetic 20 amino acid peptide from internal region of human CDCP1. Percent identity with other species by BLAST analysis: Human, Chimpanzee, Gorilla, Orangutan, Gibbon, Monkey, Galago, Marmoset, Rat (100%); Mouse, Panda, Dog, Rabbit, Horse, Pig (95%); Elephant (90%); Hamster, Bovine, Bat (80%).
Formulation:	PBS, 0.1% sodium azide.
Concentration:	lot specific
Purification:	Immunoaffinity purified
Conjugation:	Unconjugated
Storage:	Store at -20°C as received.
Stability:	Stable for 12 months from date of receipt.
Gene Name:	CUB domain containing protein 1
Database Link:	NP_073753 Entrez Gene 109332 Mouse Entrez Gene 484797 Dog Entrez Gene 64866 Human Q9H5V8
Synonyms:	CD318; SIMA135; TRASK
Protein Families:	ES Cell Differentiation/IPS, Transmembrane



[View online »](#)

Product images:

Anti-CDCP1 antibody IHC of human liver. Immunohistochemistry of formalin-fixed, paraffin-embedded tissue after heat-induced antigen retrieval.



Anti-CDCP1 antibody IHC of human prostate. Immunohistochemistry of formalin-fixed, paraffin-embedded tissue after heat-induced antigen retrieval.