

## Product datasheet for **TA341263**

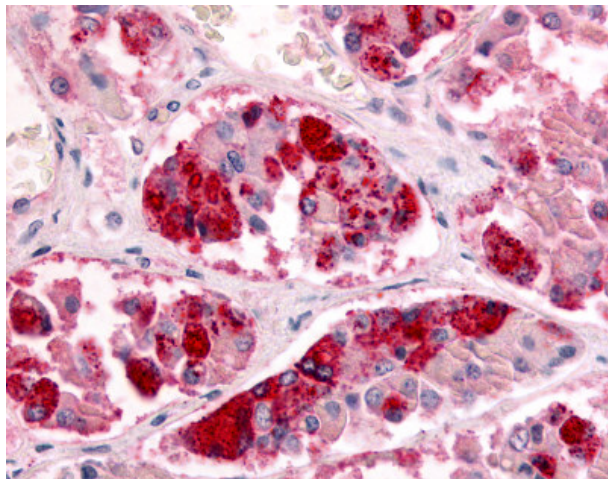
### GPCR 2037 (GPR151) Rabbit Polyclonal Antibody

#### Product data:

Product Type:	Primary Antibodies
Applications:	IHC
Recommended Dilution:	IHC-P (5 - 7.5 µg/ml)
Reactivity:	Human
Host:	Rabbit
Clonality:	Polyclonal
Immunogen:	GPR151 antibody was raised against synthetic 19 amino acid peptide from 3rd extracellular domain of human GPR151. Percent identity with other species by BLAST analysis: Human, Gorilla, Marmoset (100%); Gibbon (95%); Elephant (89%).
Formulation:	PBS, 0.1% sodium azide.
Concentration:	lot specific
Purification:	Immunoaffinity purified
Conjugation:	Unconjugated
Storage:	Store at -20°C as received.
Stability:	Stable for 12 months from date of receipt.
Gene Name:	G protein-coupled receptor 151
Database Link:	<a href="#">NP_919227</a> <a href="#">Entrez Gene 134391 Human</a> <a href="#">Q8TDV0</a>
Synonyms:	GALR4; GALRL; GPCR; PGR7
Protein Families:	Druggable Genome, Transmembrane



[View online »](#)

**Product images:**

Anti-GPR151 antibody IHC of human pituitary. Immunohistochemistry of formalin-fixed, paraffin-embedded tissue after heat-induced antigen retrieval.