

Product datasheet for **TA341262**

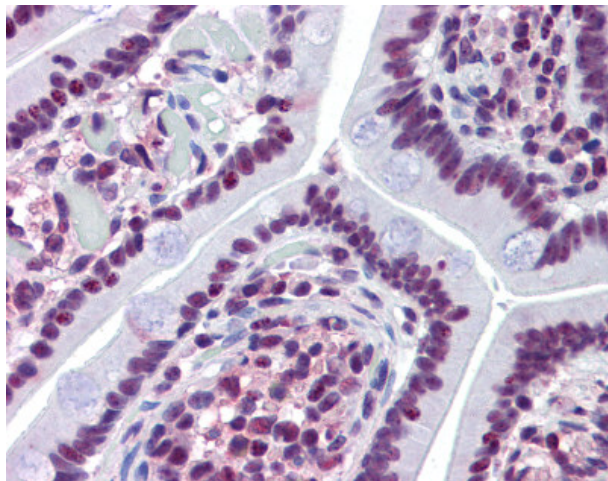
Prominin 2 (PROM2) Rabbit Polyclonal Antibody

Product data:

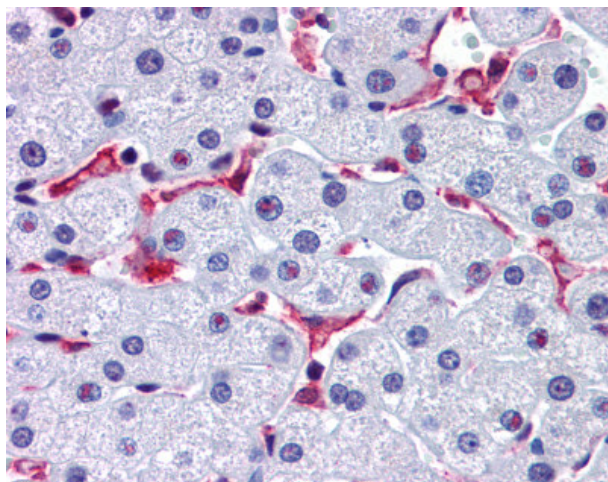
Product Type:	Primary Antibodies
Applications:	IHC
Recommended Dilution:	IHC-P (2.5 - 5 µg/ml)
Reactivity:	Human (Predicted: Horse)
Host:	Rabbit
Clonality:	Polyclonal
Immunogen:	Prominin 2 / PROM2 antibody was raised against synthetic 16 amino acid peptide from internal region of human PROM2. Percent identity with other species by BLAST analysis: Human, Chimpanzee, Gorilla, Orangutan, Gibbon, Monkey (100%); Horse (94%); Panda, Dog, Rabbit (88%); Galago, Hamster, Bat, Pig (81%).
Formulation:	PBS, 0.1% sodium azide.
Concentration:	lot specific
Purification:	Immunoaffinity purified
Conjugation:	Unconjugated
Storage:	Store at -20°C as received.
Stability:	Stable for 12 months from date of receipt.
Gene Name:	prominin 2
Database Link:	NP_653308 Entrez Gene 150696 Human Q8N271
Synonyms:	PROML2
Note:	Antigen retrieval with HIER and sodium citrate at pH 6.0 is required for Immunohistochemistry using formalin-fixed paraffin-embedded human tissues.
Protein Families:	Transmembrane



[View online »](#)

Product images:

Anti-PROM2 antibody IHC of human small intestine. Immunohistochemistry of formalin-fixed, paraffin-embedded tissue after heat-induced antigen retrieval.



Anti-PROM2 antibody IHC of human liver. Immunohistochemistry of formalin-fixed, paraffin-embedded tissue after heat-induced antigen retrieval.