

## Product datasheet for **TA341260**

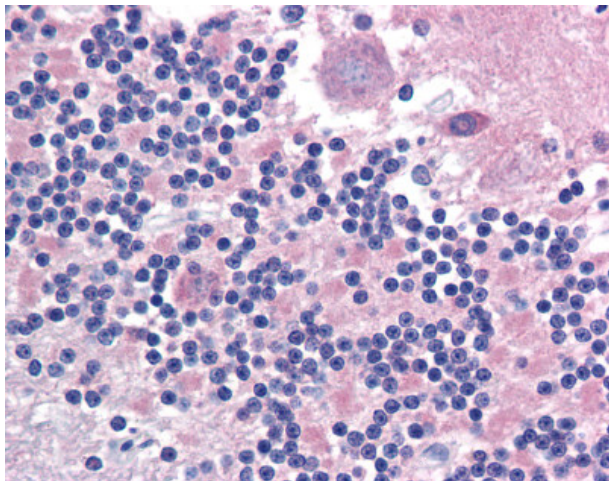
### Cell adhesion molecule 2 (CADM2) Rabbit Polyclonal Antibody

#### Product data:

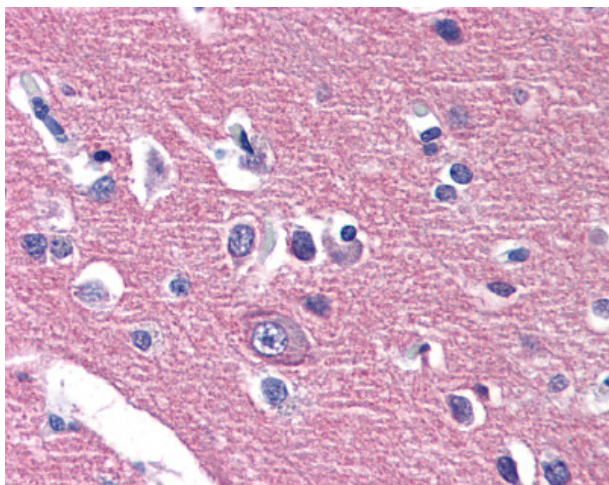
Product Type:	Primary Antibodies
Applications:	IHC
Recommended Dilution:	IHC-P (10 µg/ml)
Reactivity:	Human (Predicted: Chicken)
Host:	Rabbit
Clonality:	Polyclonal
Immunogen:	CADM2 antibody was raised against synthetic 16 amino acid peptide from internal region of human CADM2. Percent identity with other species by BLAST analysis: Human, Chimpanzee, Gorilla, Orangutan, Gibbon, Monkey, Galago, Marmoset, Mouse, Rat, Hamster, Elephant, Panda, Bovine, Dog, Bat, Horse, Rabbit, Pig, Opossum (100%); Turkey, Zebra finch, Chicken, Platypus, Lizard (94%); Xenopus (88%); Pufferfish, Zebrafish (81%).
Formulation:	PBS, 0.1% sodium azide.
Concentration:	lot specific
Purification:	Immunoaffinity purified
Conjugation:	Unconjugated
Storage:	Store at -20°C as received.
Stability:	Stable for 12 months from date of receipt.
Gene Name:	cell adhesion molecule 2
Database Link:	<a href="#">NP_001161146</a> <a href="#">Entrez Gene 253559 Human</a> <a href="#">Q8N3J6</a>
Synonyms:	IGSF4D; Necl-3; NECL3; SynCAM 2; synCAM2
Note:	Antigen retrieval with HIER and sodium citrate at pH 6.0 is required for Immunohistochemistry using formalin-fixed paraffin-embedded human tissues.
Protein Families:	Druggable Genome, Transmembrane



[View online »](#)

**Product images:**

Anti-CADM2 antibody IHC of human brain, cerebellum. Immunohistochemistry of formalin-fixed, paraffin-embedded tissue after heat-induced antigen retrieval.



Anti-CADM2 antibody IHC of human brain, cortex. Immunohistochemistry of formalin-fixed, paraffin-embedded tissue after heat-induced antigen retrieval.