

Product datasheet for **TA341257**

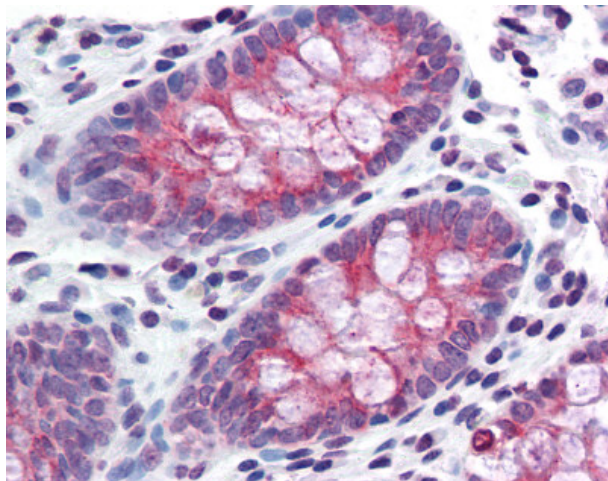
TMPRSS4 Rabbit Polyclonal Antibody

Product data:

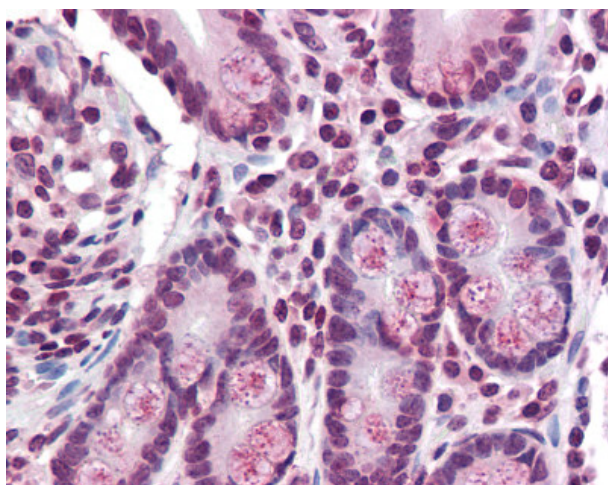
Product Type:	Primary Antibodies
Applications:	IHC
Recommended Dilution:	IHC-P (15 - 20 µg/ml)
Reactivity:	Human (Predicted: Mouse, Guinea Pig)
Host:	Rabbit
Clonality:	Polyclonal
Immunogen:	TMPRSS4 antibody was raised against synthetic 16 amino acid peptide from internal region of human TMPRSS4. Percent identity with other species by BLAST analysis: Human, Chimpanzee, Orangutan, Gibbon, Monkey, Marmoset (100%); Mouse, Guinea pig (94%); Rat, Elephant, Panda, Bovine, Horse, Rabbit, Pig, Opossum (88%); Galago, Hamster, Dog, Platypus (81%).
Formulation:	PBS, 0.1% sodium azide.
Concentration:	lot specific
Purification:	Immunoaffinity purified
Conjugation:	Unconjugated
Storage:	Store at -20°C as received.
Stability:	Stable for 12 months from date of receipt.
Gene Name:	transmembrane protease, serine 4
Database Link:	NP_899070 Entrez Gene 214523 Mouse Entrez Gene 56649 Human Q9NRS4
Synonyms:	membrane-type serine protease 2; MT-SP2; serine 4; TMPRSS3; transmembrane protease; transmembrane serine protease 3; type II membrane serine protease
Protein Families:	Druggable Genome, Protease, Transmembrane



[View online »](#)

Product images:

Anti-TMPRSS4 antibody IHC of human colon. Immunohistochemistry of formalin-fixed, paraffin-embedded tissue after heat-induced antigen retrieval.



Anti-TMPRSS4 antibody IHC of human small intestine. Immunohistochemistry of formalin-fixed, paraffin-embedded tissue after heat-induced antigen retrieval.