

## Product datasheet for **TA341255**

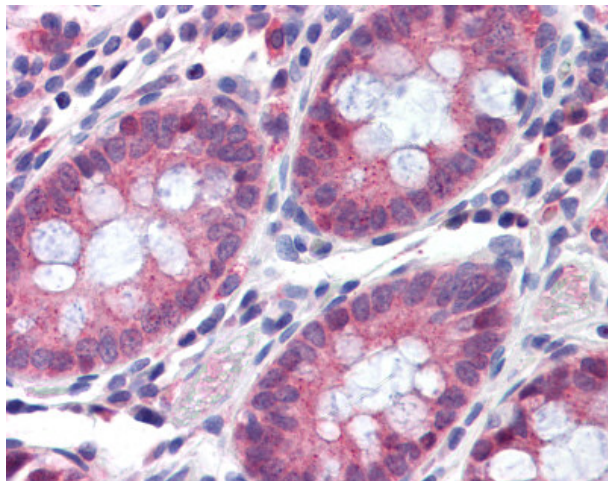
### TMPRSS4 Rabbit Polyclonal Antibody

#### Product data:

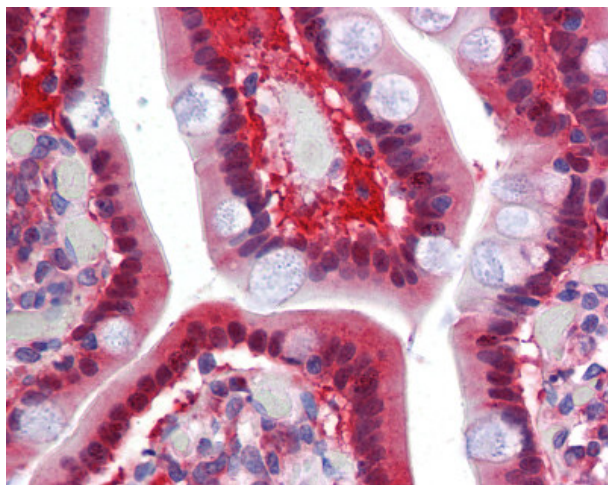
Product Type:	Primary Antibodies
Applications:	IHC
Recommended Dilution:	IHC-P (5 µg/ml)
Reactivity:	Human
Host:	Rabbit
Clonality:	Polyclonal
Immunogen:	TMPRSS4 antibody was raised against synthetic 19 amino acid peptide from internal region of human TMPRSS4. Percent identity with other species by BLAST analysis: Human, Chimpanzee, Gibbon, Monkey, Marmoset (100%); Gorilla, Orangutan (95%); Dog, Horse (89%); Hamster, Elephant, Panda, Pig (84%).
Formulation:	PBS, 0.1% sodium azide.
Concentration:	lot specific
Purification:	Immunoaffinity purified
Conjugation:	Unconjugated
Storage:	Store at -20°C as received.
Stability:	Stable for 12 months from date of receipt.
Gene Name:	transmembrane protease, serine 4
Database Link:	<a href="#">NP_899070</a> <a href="#">Entrez Gene 56649 Human</a> <a href="#">Q9NRS4</a>
Synonyms:	membrane-type serine protease 2; MT-SP2; serine 4; TMPRSS3; transmembrane protease; transmembrane serine protease 3; type II membrane serine protease
Note:	Antigen retrieval with HIER and sodium citrate at pH 6.0 is required for Immunohistochemistry using formalin-fixed paraffin-embedded human tissues.
Protein Families:	Druggable Genome, Protease, Transmembrane



[View online »](#)

**Product images:**

Anti-TMPRSS4 antibody IHC of human colon. Immunohistochemistry of formalin-fixed, paraffin-embedded tissue after heat-induced antigen retrieval.



Anti-TMPRSS4 antibody IHC of human small intestine. Immunohistochemistry of formalin-fixed, paraffin-embedded tissue after heat-induced antigen retrieval.