

## Product datasheet for **TA341252**

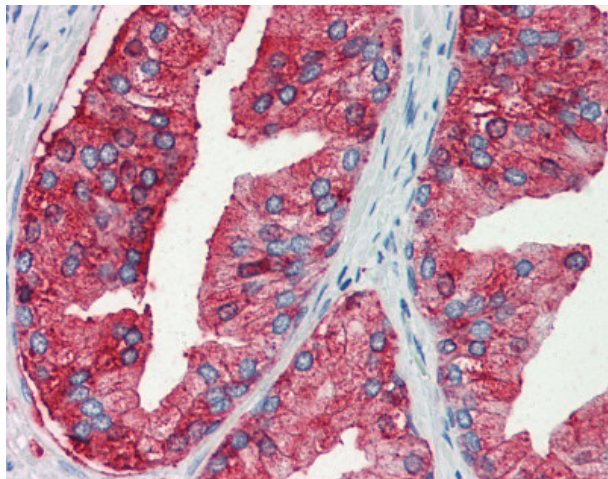
### MUC13 Rabbit Polyclonal Antibody

#### Product data:

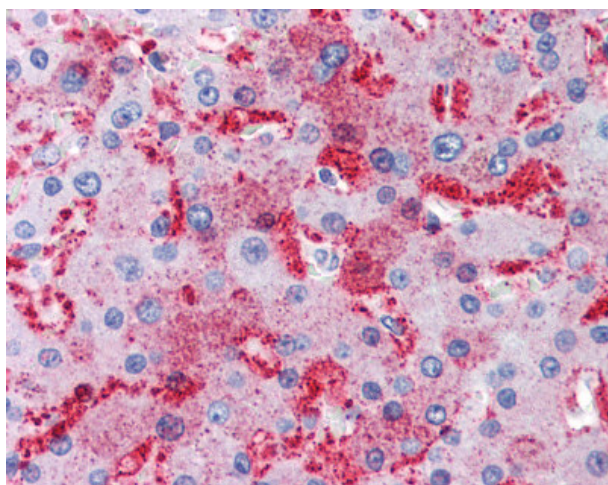
Product Type:	Primary Antibodies
Applications:	IHC
Recommended Dilution:	IHC-P (10 µg/ml)
Reactivity:	Human (Predicted: Monkey)
Host:	Rabbit
Clonality:	Polyclonal
Immunogen:	MUC13 antibody was raised against synthetic 14 amino acid peptide from internal region of human MUC13. Percent identity with other species by BLAST analysis: Human, Gorilla, Gibbon, Marmoset (100%); Monkey (93%).
Formulation:	PBS, 0.1% sodium azide.
Concentration:	lot specific
Purification:	Immunoaffinity purified
Conjugation:	Unconjugated
Storage:	Store at -20°C as received.
Stability:	Stable for 12 months from date of receipt.
Gene Name:	mucin 13, cell surface associated
Database Link:	<a href="#">NP_149038</a> <a href="#">Entrez Gene 716407 Monkey</a> <a href="#">Entrez Gene 56667 Human</a> <a href="#">Q9H3R2</a>
Synonyms:	DRCC1; MUC-13
Protein Families:	Transmembrane



[View online »](#)

**Product images:**

Anti-MUC13 antibody IHC of human prostate. Immunohistochemistry of formalin-fixed, paraffin-embedded tissue after heat-induced antigen retrieval.



Anti-MUC13 antibody IHC of human liver. Immunohistochemistry of formalin-fixed, paraffin-embedded tissue after heat-induced antigen retrieval.