

Product datasheet for **TA341249**

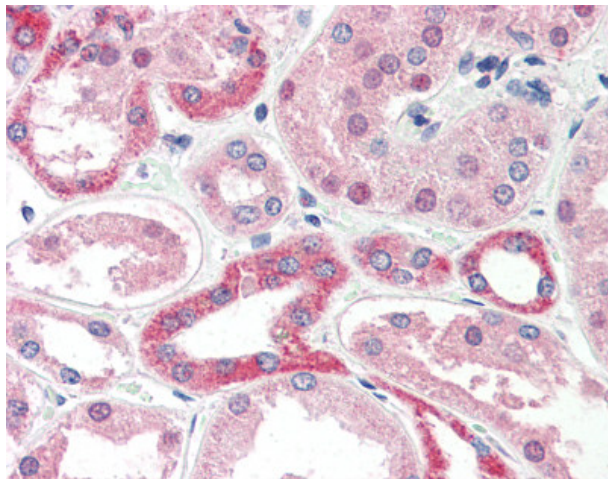
Cell adhesion molecule 4 (CADM4) Rabbit Polyclonal Antibody

Product data:

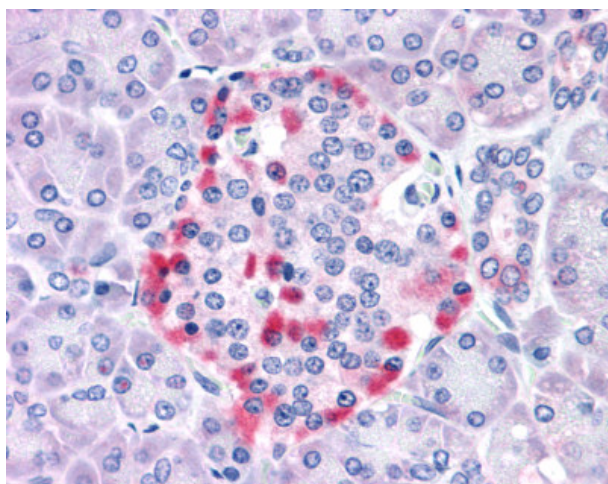
Product Type:	Primary Antibodies
Applications:	IHC
Recommended Dilution:	IHC-P (10 - 15 µg/ml)
Reactivity:	Human
Host:	Rabbit
Clonality:	Polyclonal
Immunogen:	IGSF4C / CADM4 antibody was raised against synthetic 14 amino acid peptide from internal region of human CADM4 / NECL-4. Percent identity with other species by BLAST analysis: Human, Gorilla, Gibbon, Monkey, Marmoset, Mouse, Rat, Elephant, Panda, Bovine, Dog, Bat, Horse, Rabbit, Pig, Opossum, Platypus (100%).
Formulation:	PBS, 0.1% sodium azide.
Concentration:	lot specific
Purification:	Immunoaffinity purified
Conjugation:	Unconjugated
Storage:	Store at -20°C as received.
Stability:	Stable for 12 months from date of receipt.
Gene Name:	cell adhesion molecule 4
Database Link:	NP_660339 Entrez Gene 199731 Human Q8NFZ8
Synonyms:	IGSF4C; Necl-4; NECL4; synCAM4; TSLL2
Protein Families:	Transmembrane



[View online »](#)

Product images:

Anti-CADM4 / NECL-4 antibody IHC of human kidney. Immunohistochemistry of formalin-fixed, paraffin-embedded tissue after heat-induced antigen retrieval.



Anti-CADM4 / NECL-4 antibody IHC of human pancreas. Immunohistochemistry of formalin-fixed, paraffin-embedded tissue after heat-induced antigen retrieval.