

Product datasheet for **TA341248**

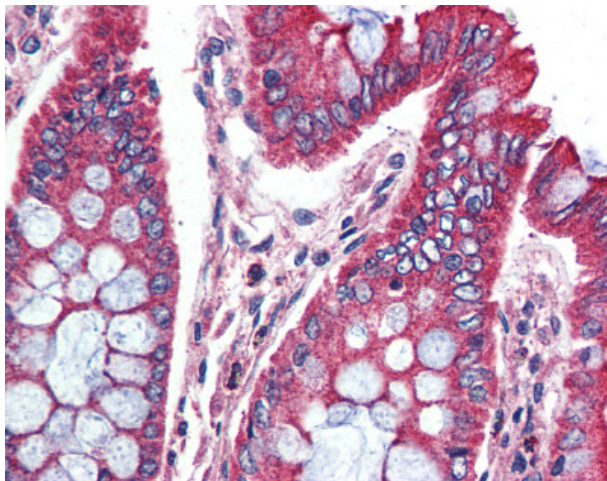
SPHK1 Rabbit Polyclonal Antibody

Product data:

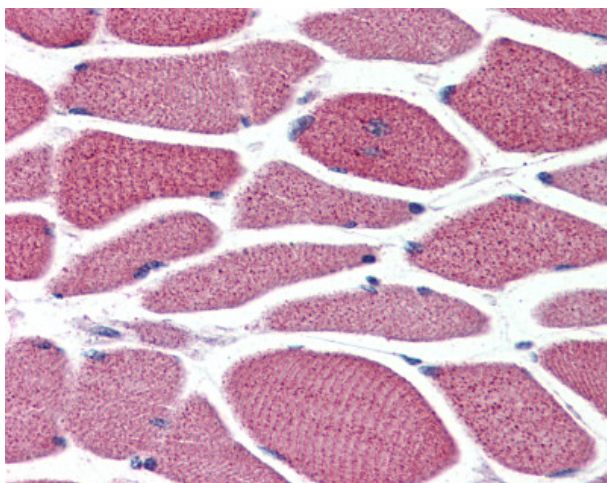
Product Type:	Primary Antibodies
Applications:	IHC
Recommended Dilution:	IHC-P (10 µg/ml)
Reactivity:	Human (Predicted: Bat, Dog, Rabbit)
Host:	Rabbit
Clonality:	Polyclonal
Immunogen:	SPHK / SPHK1 antibody was raised against synthetic 15 amino acid peptide from N-Terminus of human SPHK1. Percent identity with other species by BLAST analysis: Human, Gibbon, Monkey (100%); Gorilla, Elephant, Panda, Dog, Bat, Rabbit (93%); Horse (87%); Bovine (80%).
Formulation:	PBS, 0.1% sodium azide.
Concentration:	lot specific
Purification:	Immunoaffinity purified
Conjugation:	Unconjugated
Storage:	Store at -20°C as received.
Stability:	Stable for 12 months from date of receipt.
Gene Name:	sphingosine kinase 1
Database Link:	NP_892010 Entrez Gene 483329 Dog Entrez Gene 8877 Human Q9NYA1
Synonyms:	SPHK
Note:	Antigen retrieval requires Proteinase K treatment.
Protein Families:	Druggable Genome
Protein Pathways:	Calcium signaling pathway, Fc gamma R-mediated phagocytosis, Metabolic pathways, Sphingolipid metabolism, VEGF signaling pathway



[View online »](#)

Product images:

Anti-SPHK1 antibody IHC of human colon. Immunohistochemistry of formalin-fixed, paraffin-embedded tissue after heat-induced antigen retrieval.



Anti-SPHK1 antibody IHC of human skeletal muscle. Immunohistochemistry of formalin-fixed, paraffin-embedded tissue after heat-induced antigen retrieval.