

Product datasheet for **TA341239**

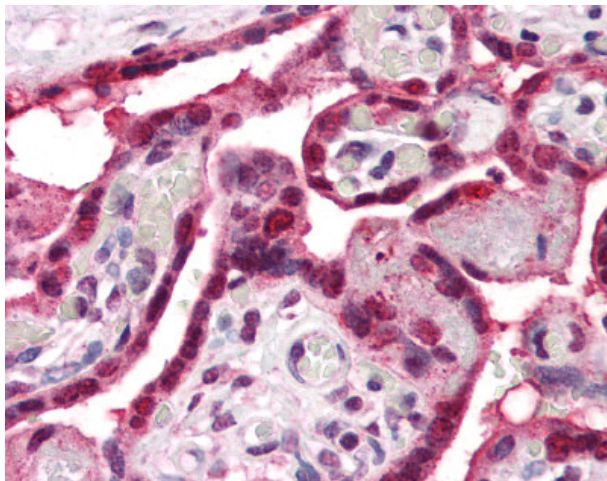
ENT1 (SLC29A1) Rabbit Polyclonal Antibody

Product data:

Product Type:	Primary Antibodies
Applications:	IHC
Recommended Dilution:	IHC-P (2.5 µg/ml)
Reactivity:	Human (Predicted: Pig)
Host:	Rabbit
Clonality:	Polyclonal
Immunogen:	SLC29A1 / ENT1 antibody was raised against synthetic 16 amino acid peptide from internal region of human ENT1. Percent identity with other species by BLAST analysis: Human, Chimpanzee, Gorilla, Gibbon, Monkey, Marmoset, Goat, Elephant, Panda, Bat, Bovine, Horse, Rabbit, Guinea pig (100%); Orangutan, Pig (94%); Dog (88%); Galago, Mouse, Rat (81%).
Formulation:	PBS, 0.1% sodium azide.
Concentration:	lot specific
Purification:	Immunoaffinity purified
Conjugation:	Unconjugated
Storage:	Store at -20°C as received.
Stability:	Stable for 12 months from date of receipt.
Gene Name:	solute carrier family 29 member 1 (Augustine blood group)
Database Link:	NP_001071642 Entrez Gene 2030 Human Q99808
Synonyms:	ENT1
Protein Families:	Transmembrane



[View online »](#)

Product images:

Anti-ENT1 antibody IHC of human placenta. Immunohistochemistry of formalin-fixed, paraffin-embedded tissue after heat-induced antigen retrieval.