

Product datasheet for **TA341238**

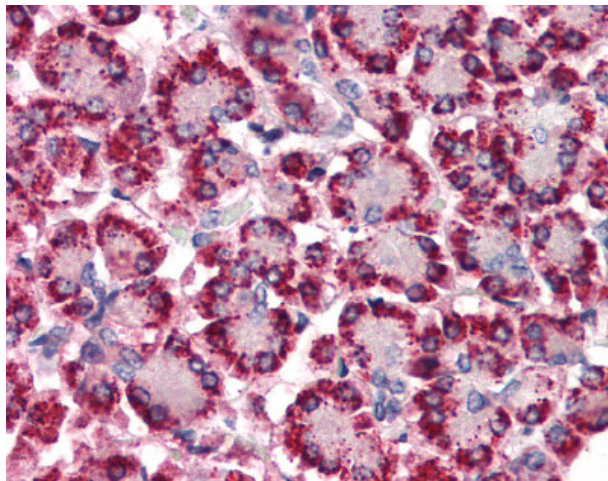
STEAP4 Rabbit Polyclonal Antibody

Product data:

Product Type:	Primary Antibodies
Applications:	IHC
Recommended Dilution:	IHC-P (2.5 µg/ml)
Reactivity:	Human (Predicted: Monkey)
Host:	Rabbit
Clonality:	Polyclonal
Immunogen:	STEAP4 antibody was raised against synthetic 15 amino acid peptide from N-Terminus of human STEAP4. Percent identity with other species by BLAST analysis: Human (100%); Gorilla, Monkey, Marmoset (93%); Gibbon, Mouse, Bat, Horse (87%); Hamster, Elephant, Panda, Rabbit, Pig, Xenopus (80%).
Formulation:	PBS, 0.1% sodium azide.
Concentration:	lot specific
Purification:	Immunoaffinity purified
Conjugation:	Unconjugated
Storage:	Store at -20°C as received.
Stability:	Stable for 12 months from date of receipt.
Gene Name:	STEAP4 metalloredutase
Database Link:	NP_078912 Entrez Gene 705096 Monkey Entrez Gene 79689 Human Q687X5
Synonyms:	STAMP2; TIARP; TNFAIP9
Protein Families:	Druggable Genome, Transmembrane



[View online »](#)

Product images:

Anti-STEAP4 antibody IHC of human pancreas. Immunohistochemistry of formalin-fixed, paraffin-embedded tissue after heat-induced antigen retrieval.