

## Product datasheet for **TA341228**

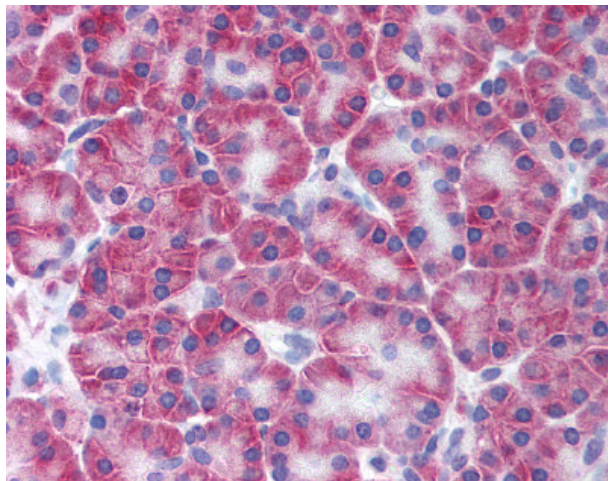
### KCNN4 Rabbit Polyclonal Antibody

#### Product data:

|                       |   |
|-----------------------|---|
| Product Type:         | Primary Antibodies  |
| Applications:         | IHC   |
| Recommended Dilution: | IHC-P (10 µg/ml)  |
| Reactivity:           | Human (Predicted: Monkey, Dog, Pig, Rabbit)   |
| Host:                 | Rabbit  |
| Clonality:            | Polyclonal  |
| Immunogen:            | KCNN4 / KCa3.1 antibody was raised against synthetic 14 amino acid peptide from N-Terminus of human KCNN4. Percent identity with other species by BLAST analysis: Human, Gorilla, Bovine (100%); Marmoset, Panda, Dog, Rabbit, Pig (93%); Mouse, Rat, Guinea pig (86%). |
| Formulation:          | PBS, 0.1% sodium azide.   |
| Concentration:        | lot specific  |
| Purification:         | Immunoaffinity purified   |
| Conjugation:          | Unconjugated  |
| Storage:              | Store at -20°C as received.   |
| Stability:            | Stable for 12 months from date of receipt.  |
| Gene Name:            | potassium calcium-activated channel subfamily N member 4  |
| Database Link:        | <a href="#">NP_002241</a><br><a href="#">Entrez Gene 484464 Dog</a> <a href="#">Entrez Gene 712383 Monkey</a> <a href="#">Entrez Gene 3783 Human</a><br><a href="#">O15554</a>  |
| Synonyms:             | hIKCa1; hKCa4; hSK4; IK; IK1; IKCA1; KCa3.1; KCA4; SK4  |
| Protein Families:     | Druggable Genome, Ion Channels: Potassium, Transmembrane  |



[View online »](#)

**Product images:**

Anti-KCNN4 antibody IHC of human pancreas. Immunohistochemistry of formalin-fixed, paraffin-embedded tissue after heat-induced antigen retrieval.