

Product datasheet for **TA341226**

REEP5 Rabbit Polyclonal Antibody

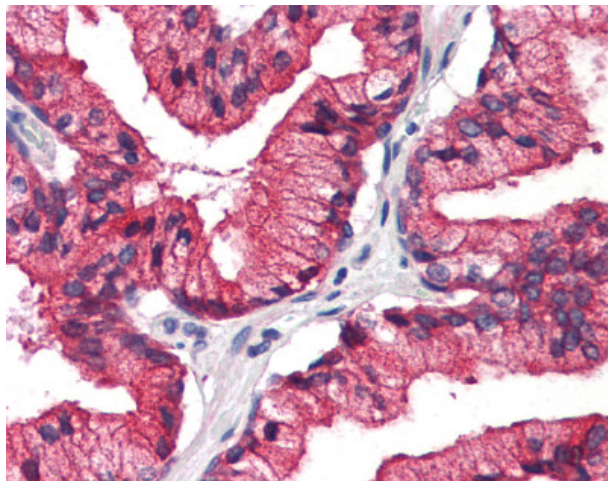
Product data:

Product Type:	Primary Antibodies
Applications:	IHC
Recommended Dilution:	IHC-P (5 µg/ml)
Reactivity:	Human (Predicted: Hamster, Pig)
Host:	Rabbit
Clonality:	Polyclonal
Immunogen:	REEP5 / DP1 antibody was raised against synthetic 18 amino acid peptide from C-Terminus of human REEP5. Percent identity with other species by BLAST analysis: Human, Orangutan, Gibbon, Monkey, Marmoset, Elephant, Turkey, Chicken (100%); Hamster, Pig, Opossum, Platypus (94%); Mouse, Rat, Horse, Xenopus, Frog (89%); Dog, Bovine (83%).
Formulation:	PBS, 0.1% sodium azide.
Concentration:	lot specific
Purification:	Immunoaffinity purified
Conjugation:	Unconjugated
Storage:	Store at -20°C as received.
Stability:	Stable for 12 months from date of receipt.
Gene Name:	receptor accessory protein 5
Database Link:	NP_005660 Entrez Gene 7905 Human Q00765
Synonyms:	C5orf18; D5S346; DP1; TB2; Yip2e; YOP1
Protein Families:	Druggable Genome, Transmembrane



[View online »](#)

Product images:



Human, Prostate: Formalin-Fixed Paraffin-Embedded (FFPE)