

Product datasheet for **TA341225**

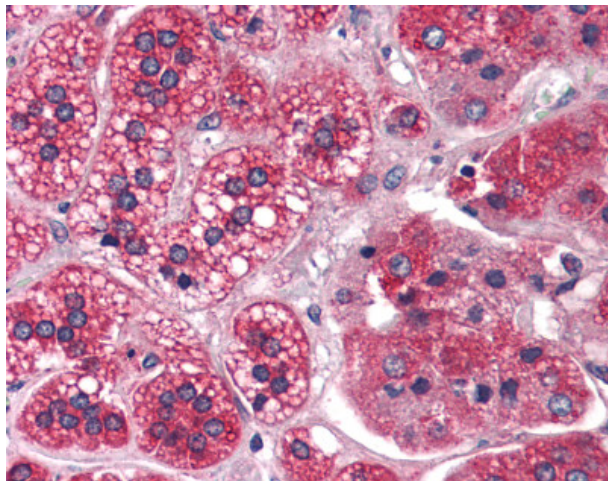
REEP5 Rabbit Polyclonal Antibody

Product data:

Product Type:	Primary Antibodies
Applications:	IHC
Recommended Dilution:	IHC-P (2.5 µg/ml)
Reactivity:	Human (Predicted: Chicken)
Host:	Rabbit
Clonality:	Polyclonal
Immunogen:	REEP5 / DP1 antibody was raised against synthetic 14 amino acid peptide from N-Terminus of human REEP5. Percent identity with other species by BLAST analysis: Human, Orangutan, Gibbon, Monkey, Marmoset, Mouse, Rat (100%); Chicken (93%); Elephant, Platypus (86%).
Formulation:	PBS, 0.1% sodium azide.
Concentration:	lot specific
Purification:	Immunoaffinity purified
Conjugation:	Unconjugated
Storage:	Store at -20°C as received.
Stability:	Stable for 12 months from date of receipt.
Gene Name:	receptor accessory protein 5
Database Link:	NP_005660 Entrez Gene 7905 Human Q00765
Synonyms:	C5orf18; D5S346; DP1; TB2; Yip2e; YOP1
Protein Families:	Druggable Genome, Transmembrane



[View online »](#)

Product images:

Anti-REEP5 antibody IHC of human adrenal. Immunohistochemistry of formalin-fixed, paraffin-embedded tissue after heat-induced antigen retrieval.