

## Product datasheet for **TA341221**

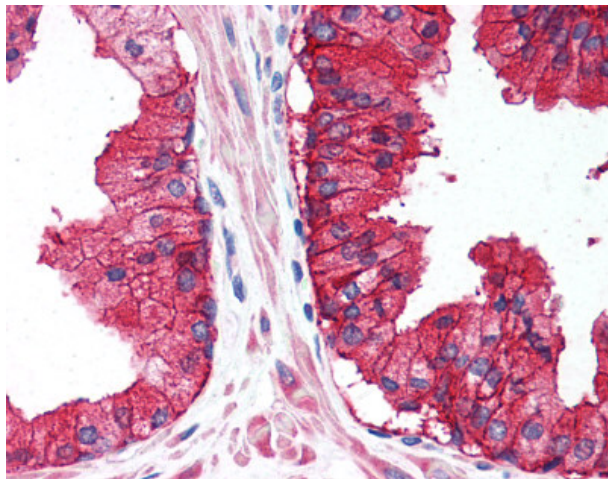
### CD38 Rabbit Polyclonal Antibody

#### Product data:

Product Type:	Primary Antibodies
Applications:	IHC
Recommended Dilution:	IHC-P (5 µg/ml)
Reactivity:	Human
Host:	Rabbit
Clonality:	Polyclonal
Immunogen:	CD38 antibody was raised against synthetic 16 amino acid peptide from internal region of human CD38. Percent identity with other species by BLAST analysis: Human, Gibbon, Monkey (100%); Gorilla (94%); Marmoset (88%).
Formulation:	PBS, 0.1% sodium azide.
Concentration:	lot specific
Purification:	Immunoaffinity purified
Conjugation:	Unconjugated
Storage:	Store at -20°C as received.
Stability:	Stable for 12 months from date of receipt.
Gene Name:	CD38 molecule
Database Link:	<a href="#">NP_001766</a> <a href="#">Entrez Gene 952 Human</a> <a href="#">P28907</a>
Synonyms:	ADPRC 1; T10
Protein Families:	Cancer stem cells, Druggable Genome, ES Cell Differentiation/IPS, Induced pluripotent stem cells, Transmembrane
Protein Pathways:	Calcium signaling pathway, Hematopoietic cell lineage, Metabolic pathways, Nicotinate and nicotinamide metabolism



[View online »](#)

**Product images:**

Anti-CD38 antibody IHC of human prostate. Immunohistochemistry of formalin-fixed, paraffin-embedded tissue after heat-induced antigen retrieval.