

Product datasheet for **TA341216**

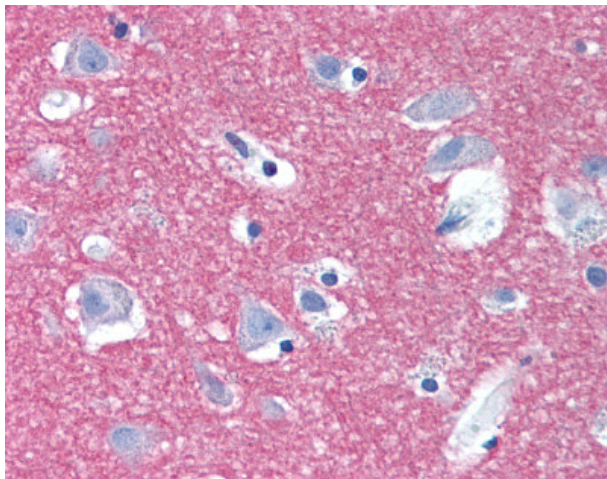
Syntaxin 1a (STX1A) Rabbit Polyclonal Antibody

Product data:

Product Type:	Primary Antibodies
Applications:	IHC
Recommended Dilution:	IHC-P (5 µg/ml)
Reactivity:	Human (Predicted: Horse, Xenopus)
Host:	Rabbit
Clonality:	Polyclonal
Immunogen:	STX1A / Syntaxin 1A antibody was raised against synthetic 16 amino acid peptide from internal region of human STX1A / Syntaxin 1A. Percent identity with other species by BLAST analysis: Human, Gorilla, Orangutan, Monkey, Marmoset, Mouse, Rat, Hamster, Elephant, Panda, Dog, Bat, Bovine, Pig, Opossum, Turkey, Chicken (100%); Horse, Xenopus (94%); Gibbon, Sheep, Zebra finch, Salmon, Stickleback, Pufferfish, Zebrafish, Ant, Water flea (88%); Beetle (81%).
Formulation:	PBS, 0.1% sodium azide.
Concentration:	lot specific
Purification:	Immunoaffinity purified
Conjugation:	Unconjugated
Storage:	Store at -20°C as received.
Stability:	Stable for 12 months from date of receipt.
Gene Name:	syntaxin 1A
Database Link:	NP_001159375 Entrez Gene 6804 Human Q16623
Synonyms:	HPC-1; P35-1; STX1; SYN1A
Protein Families:	Druggable Genome, Secreted Protein, Transmembrane
Protein Pathways:	SNARE interactions in vesicular transport



[View online »](#)

Product images:

Anti-STX1A / Syntaxin 1A antibody IHC of human brain, cortex. Immunohistochemistry of formalin-fixed, paraffin-embedded tissue after heat-induced antigen retrieval.