

Product datasheet for **TA341210**

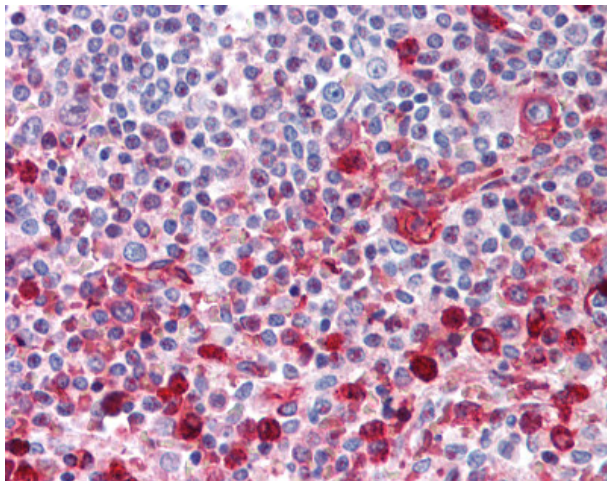
WNT16 Rabbit Polyclonal Antibody

Product data:

Product Type:	Primary Antibodies
Applications:	IHC
Recommended Dilution:	IHC-P (5 µg/ml)
Reactivity:	Human (Predicted: Monkey, Bovine, Horse)
Host:	Rabbit
Clonality:	Polyclonal
Immunogen:	WNT16 antibody was raised against synthetic 15 amino acid peptide from internal region of human WNT16. Percent identity with other species by BLAST analysis: Human, Gorilla, Gibbon, Monkey (100%); Marmoset, Bovine, Horse (93%); Hamster, Elephant, Pig (87%); Mouse, Rat, Panda, Dog, Bat, Rabbit, Lizard (80%).
Formulation:	PBS, 0.1% sodium azide.
Concentration:	lot specific
Purification:	Immunoaffinity purified
Conjugation:	Unconjugated
Storage:	Store at -20°C as received.
Stability:	Stable for 12 months from date of receipt.
Gene Name:	Wnt family member 16
Database Link:	NP_476509 Entrez Gene 694069 Monkey Entrez Gene 51384 Human Q9UBV4
Synonyms:	member 16; wingless-related MMTV integration site 16; wingless-type MMTV integration site family
Protein Families:	Secreted Protein, Transmembrane
Protein Pathways:	Basal cell carcinoma, Hedgehog signaling pathway, Melanogenesis, Pathways in cancer, Wnt signaling pathway



[View online »](#)

Product images:

Anti-WNT16 antibody IHC of human spleen. Immunohistochemistry of formalin-fixed, paraffin-embedded tissue after heat-induced antigen retrieval.