

## Product datasheet for **TA341208**

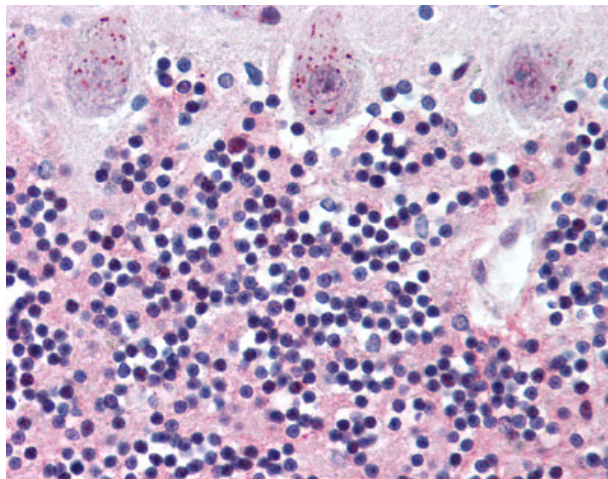
### WNT2 Rabbit Polyclonal Antibody

#### Product data:

Product Type:	Primary Antibodies
Applications:	IHC
Recommended Dilution:	IHC-P (10 - 15 µg/ml)
Reactivity:	Human (Predicted: Mouse, Rat, Bat, Bovine, Dog, Hamster, Pig, Rabbit, Sheep, Chicken, Guinea Pig)
Host:	Rabbit
Clonality:	Polyclonal
Immunogen:	WNT2 / IRP antibody was raised against synthetic 15 amino acid peptide from internal region of human WNT2. Percent identity with other species by BLAST analysis: Human, Chimpanzee, Gorilla, Orangutan, Gibbon, Baboon, Monkey, Marmoset (100%); Galago, Mouse, Rat, Ferret, Sheep, Hamster, Elephant, Panda, Dog, Bovine, Cat, Bat, Rabbit, Pig, Opossum, Guinea pig, Turkey, Chicken, Armadillo, Platypus (93%); Horse (87%).
Formulation:	PBS, 0.1% sodium azide.
Concentration:	lot specific
Purification:	Immunoaffinity purified
Conjugation:	Unconjugated
Storage:	Store at -20°C as received.
Stability:	Stable for 12 months from date of receipt.
Gene Name:	Wnt family member 2
Database Link:	<a href="#">NP_003382</a> <a href="#">Entrez Gene 22413 Mouse</a> <a href="#">Entrez Gene 114487 Rat</a> <a href="#">Entrez Gene 612141 Dog</a> <a href="#">Entrez Gene 7472 Human</a> <a href="#">P09544</a>
Synonyms:	INT1L1; IRP
Protein Families:	Adult stem cells, Cancer stem cells, ES Cell Differentiation/IPS, Secreted Protein, Stem cell relevant signaling - Wnt Signaling pathway
Protein Pathways:	Basal cell carcinoma, Hedgehog signaling pathway, Melanogenesis, Pathways in cancer, Wnt signaling pathway



[View online »](#)

**Product images:**

Anti-WNT2 antibody IHC of human brain, cerebellum. Immunohistochemistry of formalin-fixed, paraffin-embedded tissue after heat-induced antigen retrieval.