

## Product datasheet for **TA341207**

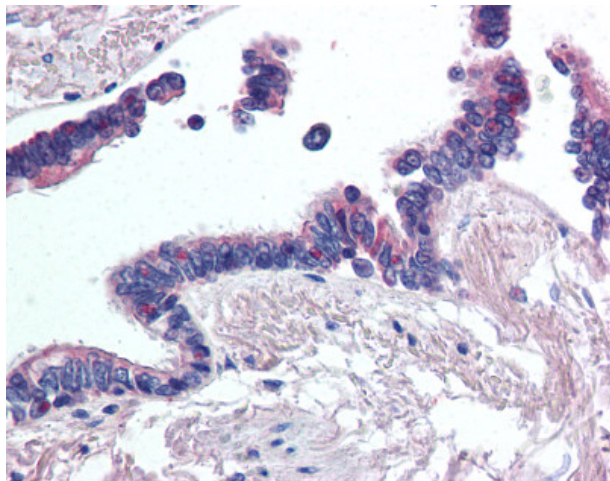
### WNT2 Rabbit Polyclonal Antibody

#### Product data:

Product Type:	Primary Antibodies
Applications:	IHC
Recommended Dilution:	IHC-P (10 µg/ml)
Reactivity:	Human
Host:	Rabbit
Clonality:	Polyclonal
Immunogen:	WNT2 / IRP antibody was raised against synthetic 15 amino acid peptide from internal region of human WNT2. Percent identity with other species by BLAST analysis: Human, Chimpanzee, Gorilla, Orangutan, Gibbon, Baboon, Monkey (100%); Marmoset, Mouse, Hamster, Guinea pig, Platypus (87%); Galago, Rat, Ferret, Elephant, Panda, Dog, Cat, Bat, Horse, Rabbit, Pig, Turkey, Chicken, Armadillo (80%).
Formulation:	PBS, 0.1% sodium azide.
Concentration:	lot specific
Purification:	Immunoaffinity purified
Conjugation:	Unconjugated
Storage:	Store at -20°C as received.
Stability:	Stable for 12 months from date of receipt.
Gene Name:	Wnt family member 2
Database Link:	<a href="#">NP_003382</a> <a href="#">Entrez Gene 7472 Human P09544</a>
Synonyms:	INT1L1; IRP
Protein Families:	Adult stem cells, Cancer stem cells, ES Cell Differentiation/IPS, Secreted Protein, Stem cell relevant signaling - Wnt Signaling pathway
Protein Pathways:	Basal cell carcinoma, Hedgehog signaling pathway, Melanogenesis, Pathways in cancer, Wnt signaling pathway



[View online »](#)

**Product images:**

Anti-WNT2 antibody IHC of human lung, respiratory epithelium. Immunohistochemistry of formalin-fixed, paraffin-embedded tissue after heat-induced antigen retrieval.