

## Product datasheet for **TA341203**

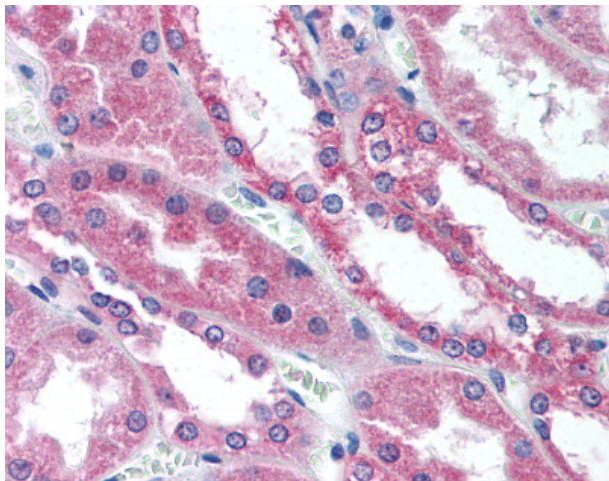
### WNT1 Rabbit Polyclonal Antibody

#### Product data:

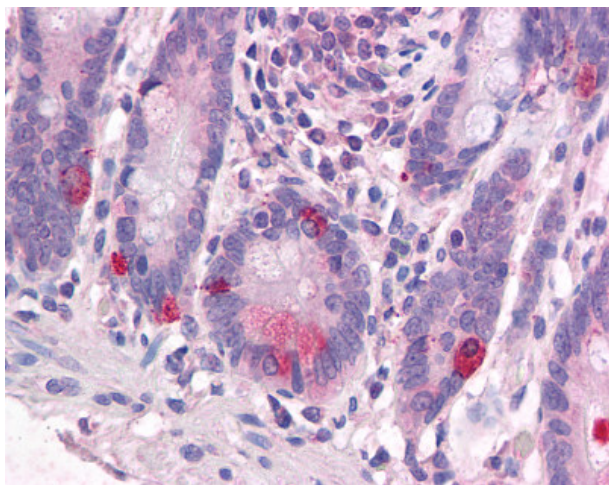
Product Type:	Primary Antibodies
Applications:	IHC
Recommended Dilution:	IHC-P (10 - 15 µg/ml)
Reactivity:	Human (Predicted: Monkey, Hamster, Chicken)
Host:	Rabbit
Clonality:	Polyclonal
Immunogen:	WNT1 antibody was raised against synthetic 19 amino acid peptide from internal region of human WNT1. Percent identity with other species by BLAST analysis: Human, Gorilla, Gibbon, Monkey, Mouse, Rat, Elephant, Panda, Bovine, Horse, Rabbit, Pig (100%); Marmoset, Hamster, Chicken, Lizard (95%); Stickleback (84%).
Formulation:	PBS, 0.1% sodium azide.
Concentration:	lot specific
Purification:	Immunoaffinity purified
Conjugation:	Unconjugated
Storage:	Store at -20°C as received.
Stability:	Stable for 12 months from date of receipt.
Gene Name:	Wnt family member 1
Database Link:	<a href="#">NP_005421</a> <a href="#">Entrez Gene 709009 Monkey</a> <a href="#">Entrez Gene 7471 Human</a> <a href="#">P04628</a>
Synonyms:	BMND16; INT1; OI15
Protein Families:	Adult stem cells, Cancer stem cells, Druggable Genome, ES Cell Differentiation/IPS, Secreted Protein, Stem cell relevant signaling - Wnt Signaling pathway, Transmembrane
Protein Pathways:	Basal cell carcinoma, Hedgehog signaling pathway, Melanogenesis, Pathways in cancer, Wnt signaling pathway



[View online »](#)

**Product images:**

Anti-WNT1 antibody IHC of human kidney. Immunohistochemistry of formalin-fixed, paraffin-embedded tissue after heat-induced antigen retrieval.



Anti-WNT1 antibody IHC of human small intestine. Immunohistochemistry of formalin-fixed, paraffin-embedded tissue after heat-induced antigen retrieval.