

Product datasheet for **TA341202**

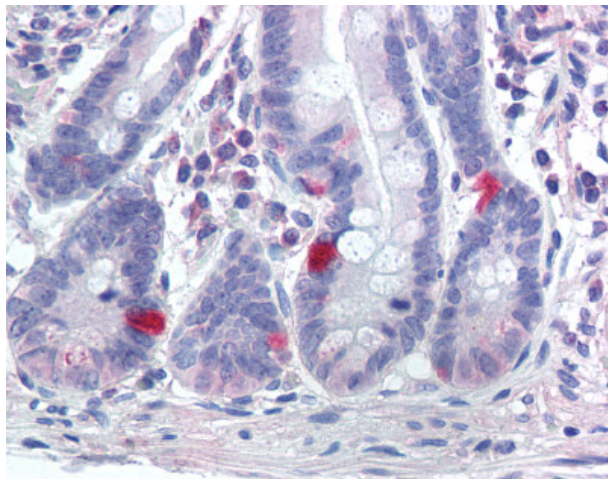
Nav1.7 (SCN9A) Rabbit Polyclonal Antibody

Product data:

Product Type:	Primary Antibodies
Applications:	IHC
Recommended Dilution:	IHC-P (10 µg/ml)
Reactivity:	Human (Predicted: Monkey, Mouse, Bovine, Dog, Horse, Pig, Rabbit)
Host:	Rabbit
Clonality:	Polyclonal
Immunogen:	SCN9A / Nav1.7 antibody was raised against synthetic 17 amino acid peptide from internal region of human SCN9A / Nav1.7. Percent identity with other species by BLAST analysis: Human, Gorilla, Gibbon, Monkey (100%); Marmoset, Mouse, Panda, Dog, Bovine, Horse, Rabbit, Pig (94%); Rat, Hamster, Bat (88%); Elephant, Platypus (82%).
Formulation:	PBS, 0.1% sodium azide.
Concentration:	lot specific
Purification:	Immunoaffinity purified
Conjugation:	Unconjugated
Storage:	Store at -20°C as received.
Stability:	Stable for 12 months from date of receipt.
Gene Name:	sodium voltage-gated channel alpha subunit 9
Database Link:	NP_002968 Entrez Gene 20274 Mouse Entrez Gene 100855710 Dog Entrez Gene 574119 Monkey Entrez Gene 6335 Human Q15858
Synonyms:	ETHA; FEB3B; GEFSP7; HSAN2D; Nav1.7; NE-NA; NENA; PN1; SFNP
Protein Families:	Druggable Genome, Ion Channels: Sodium



[View online »](#)

Product images:

Anti-SCN9A / Nav1.7 antibody IHC of human small intestine, neuroendocrine cells.
Immunohistochemistry of formalin-fixed, paraffin-embedded tissue after heat-induced antigen retrieval.