

## Product datasheet for **TA341200**

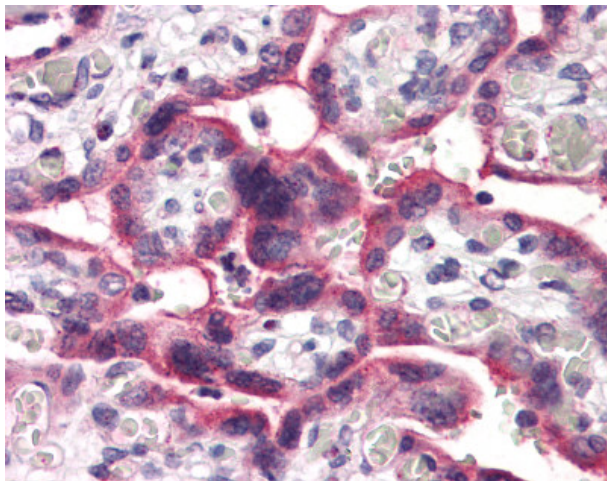
### SLC5A6 Rabbit Polyclonal Antibody

#### Product data:

Product Type:	Primary Antibodies
Applications:	IHC
Recommended Dilution:	IHC-P (10 µg/ml)
Reactivity:	Human (Predicted: Monkey, Bat, Hamster, Pig)
Host:	Rabbit
Clonality:	Polyclonal
Immunogen:	SLC5A6 / SMVT antibody was raised against synthetic 15 amino acid peptide from internal region of human SLC5A6. Percent identity with other species by BLAST analysis: Human, Gorilla, Marmoset, Elephant, Panda, Dog, Bovine, Horse, Rabbit (100%); Monkey, Hamster, Bat, Pig, Platypus (93%); Rat, Xenopus (87%); Mouse, Opossum, Stickleback, Pufferfish, Zebrafish (80%).
Formulation:	PBS, 0.1% sodium azide.
Concentration:	lot specific
Purification:	Immunoaffinity purified
Conjugation:	Unconjugated
Storage:	Store at -20°C as received.
Stability:	Stable for 12 months from date of receipt.
Gene Name:	solute carrier family 5 member 6
Database Link:	<a href="#">NP_066918</a> <a href="#">Entrez Gene 699074 Monkey</a> <a href="#">Entrez Gene 8884 Human</a> <a href="#">Q9Y289</a>
Synonyms:	SMVT
Protein Families:	Transmembrane



[View online »](#)

**Product images:**

Anti-SLC5A6 antibody IHC of human placenta. Immunohistochemistry of formalin-fixed, paraffin-embedded tissue after heat-induced antigen retrieval.